



TRANSPower

System Operator Industry Forum

30 June 2026



Today's agenda

- Key messages
- Market update
- NZGB update
- Outage update – next four weeks
- Operational update
- Consultations, publications and events
- Iberian Peninsula blackout
- Questions / Pātai





Key Messages

- National hydro storage remains well above average, contributing to lower thermal unit commitment.
- Demand continues to increase as Winter temperatures drop, resulting in lower residual generation.
- Capacity risks from July to August will require a combination of unit commitment, plant availability, and flexibility. Please keep POCP updated.
- Note the Connected Asset Commissioning, Testing, and Information Standard (CACTIS) becomes effective from 1 July 2026 (tomorrow)



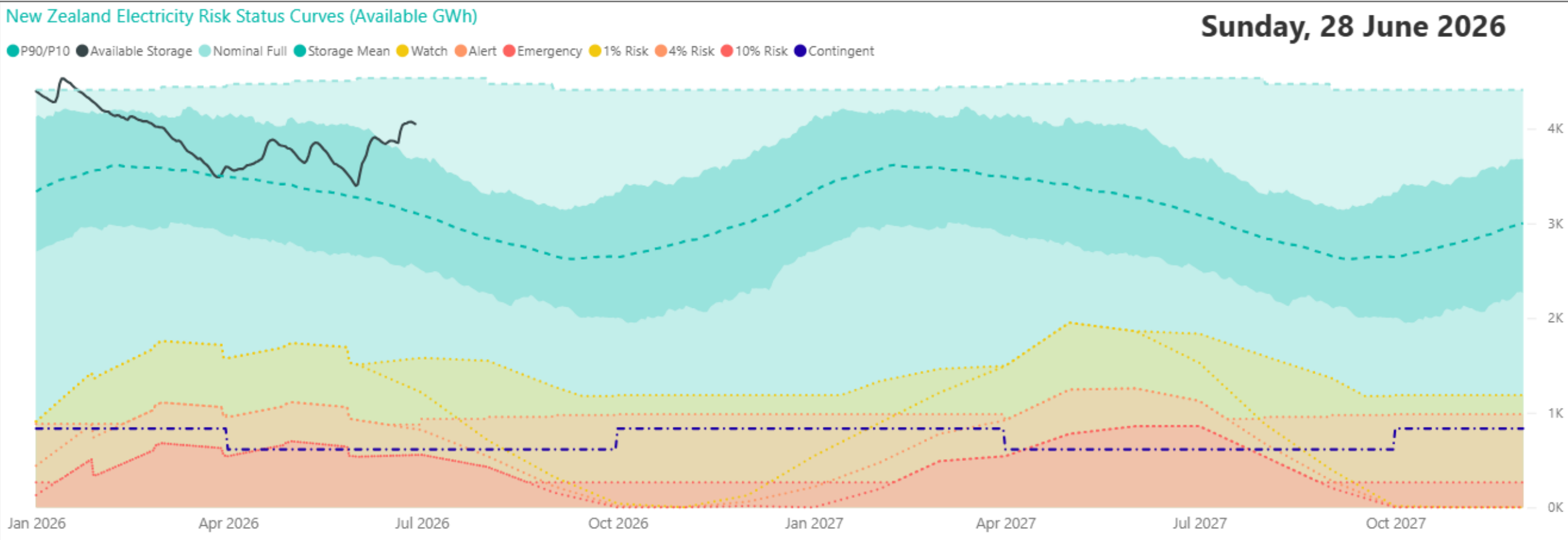
Market update

Energy: National hydro storage

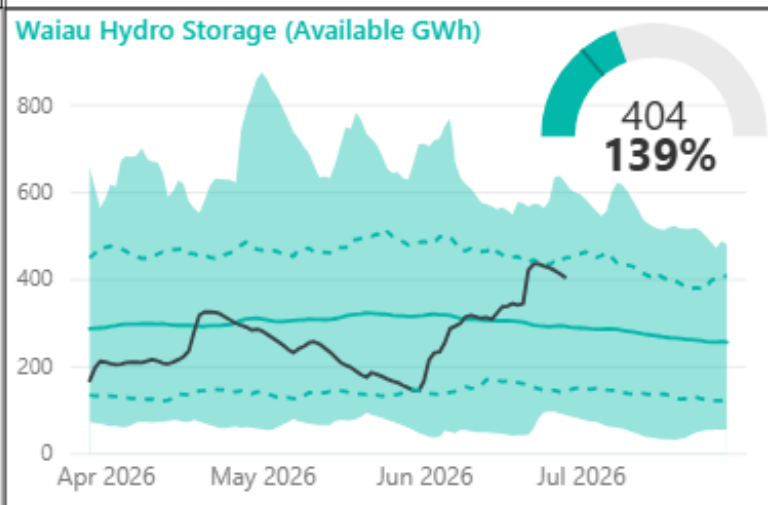
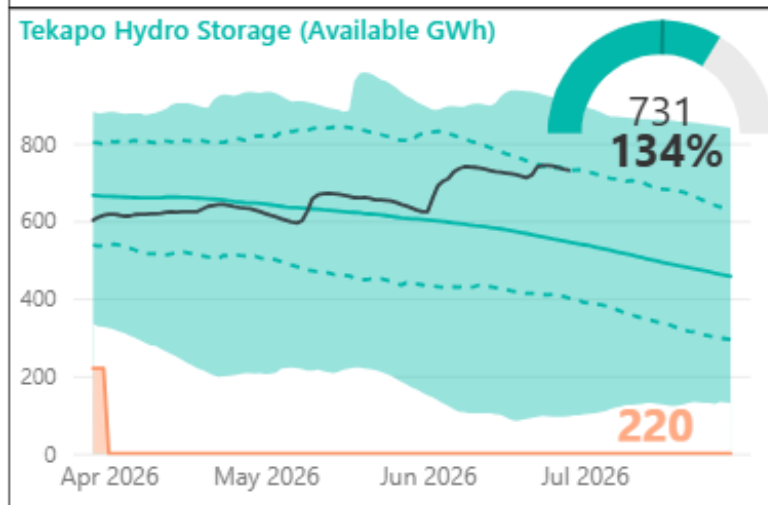
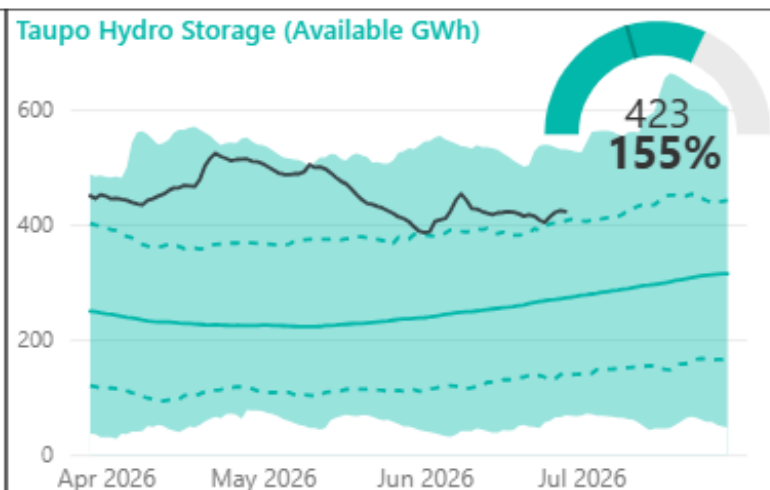
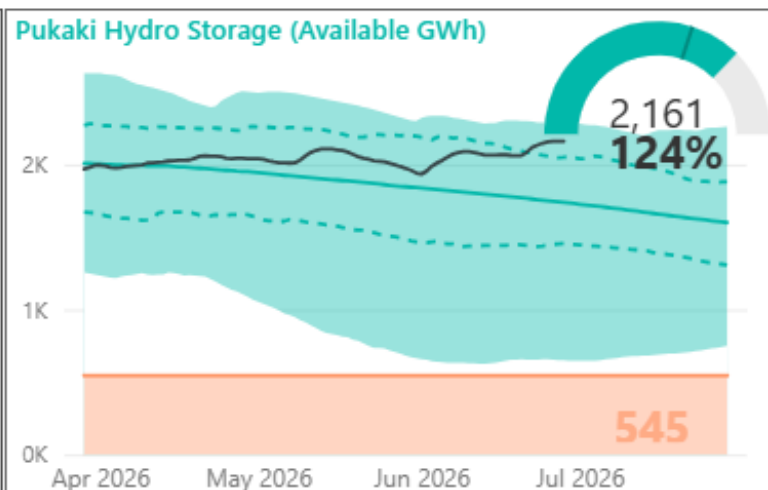
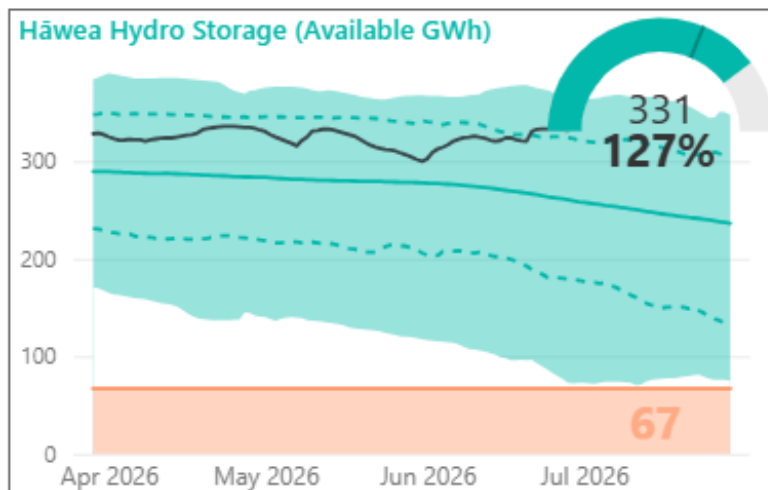
National hydro storage levels remain healthy and have increased with higher than average inflows

	Hydro storage level (% of mean ▲ / ▼)		
	New Zealand	South Island	North Island
Last forum	120%	116%	165%
Now	130% ▲	128% ▲	155% ▼

Note: these numbers include contingent storage, so they differ from those reported by NZX



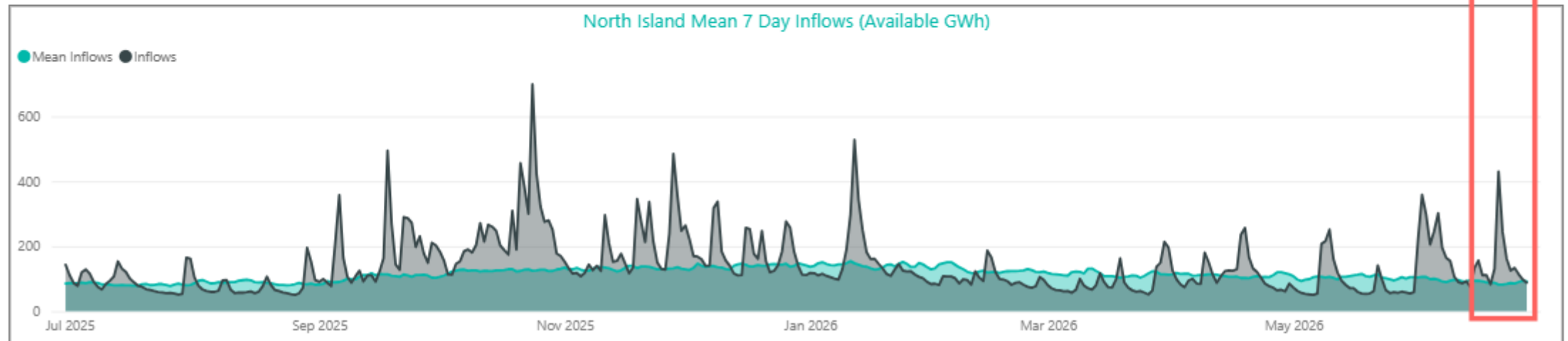
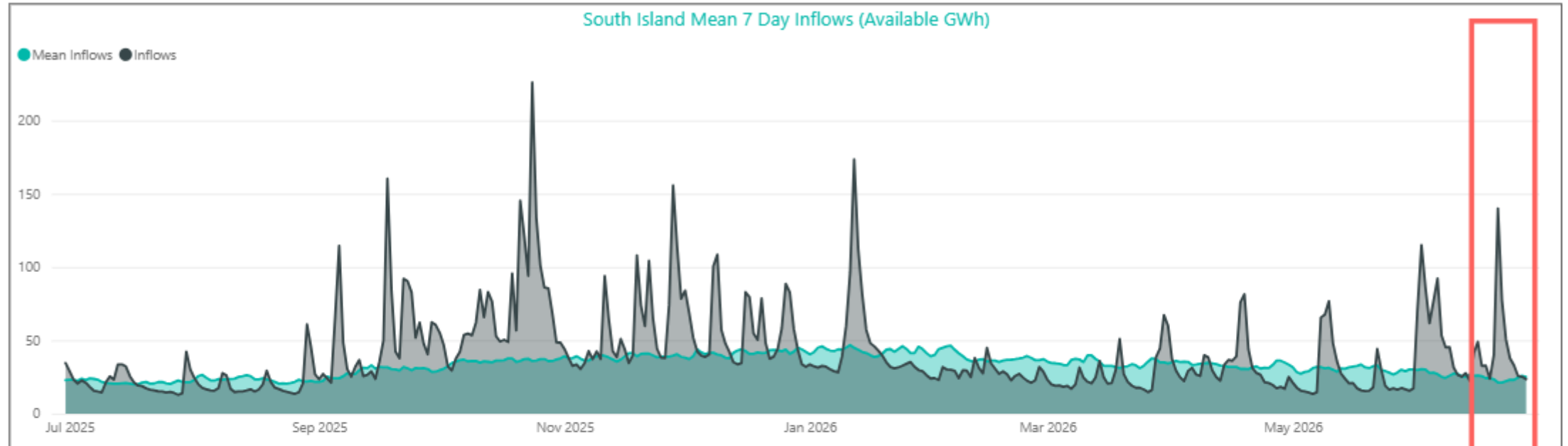
Hydro storage by catchment



Lake	Percent	GWh	Mean
Hāwea	127%	331.4	260.6
Manapōuri	127%	129.5	101.7
New Zealand	130%	4049.7	3108.9
Pūkaki	124%	2161.3	1738.7
South Island	128%	3627.1	2836.5
Taupō	155%	422.6	272.4
Te Anau	145%	274.2	189.4
Tekapo	134%	730.7	546.2

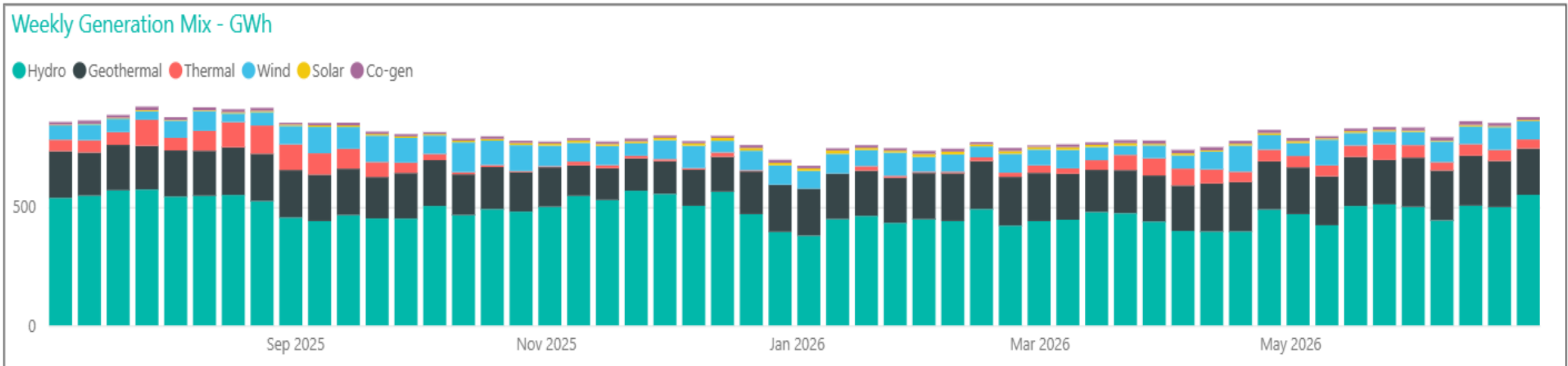
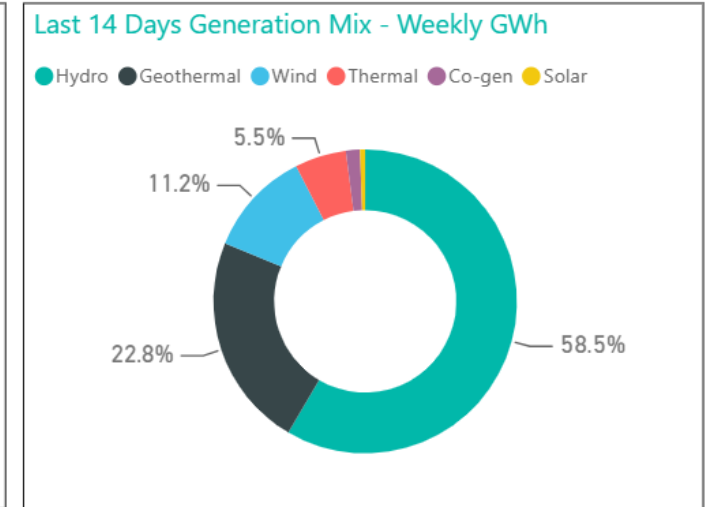
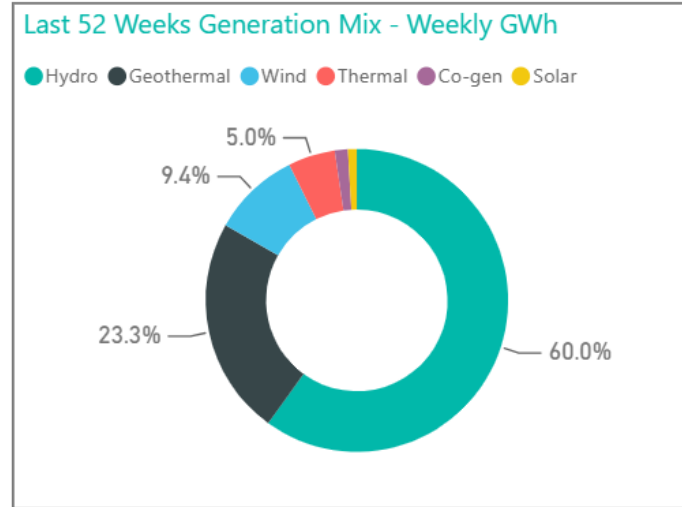


Hydro inflows



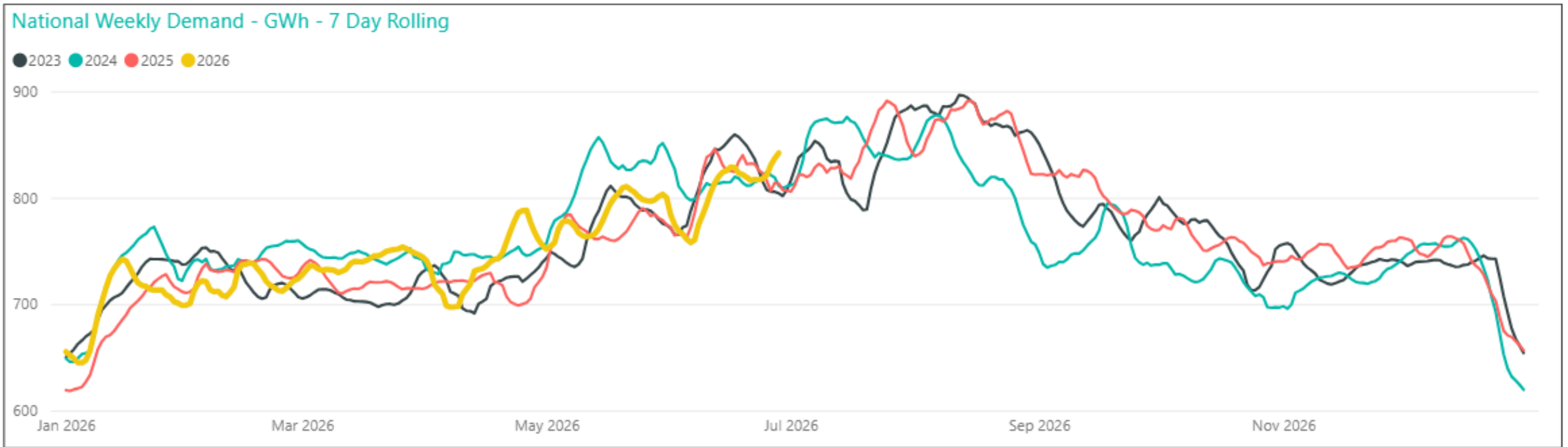
Generation mix

- Hydro generation at 58% of the mix – slightly below yearly average
- Above average wind generation at 11%
- Thermal generation at its yearly average of 5%
- Geothermal close to average at 23%



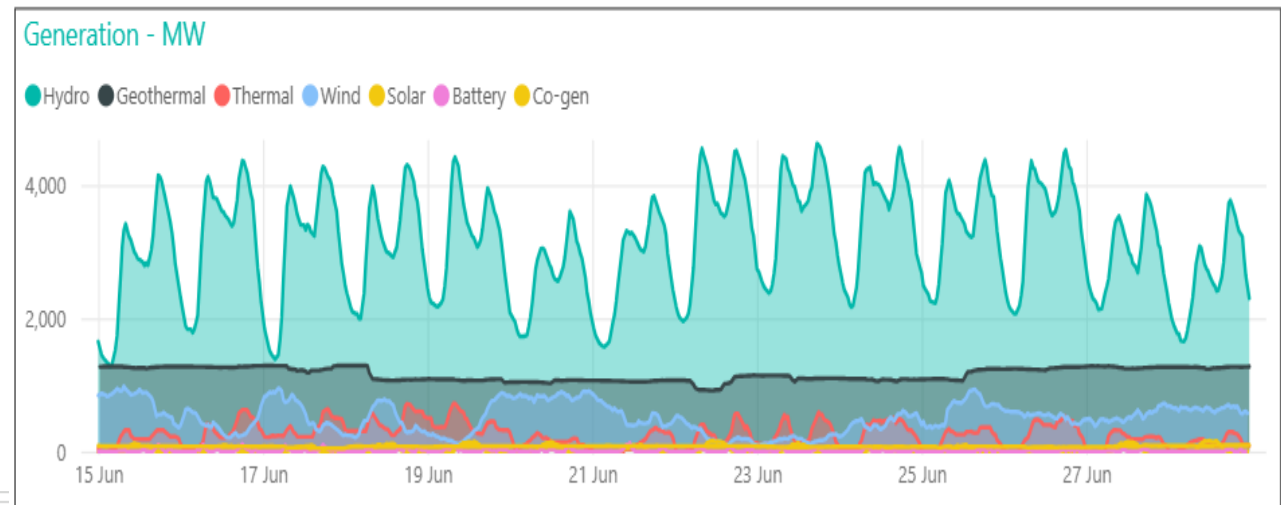
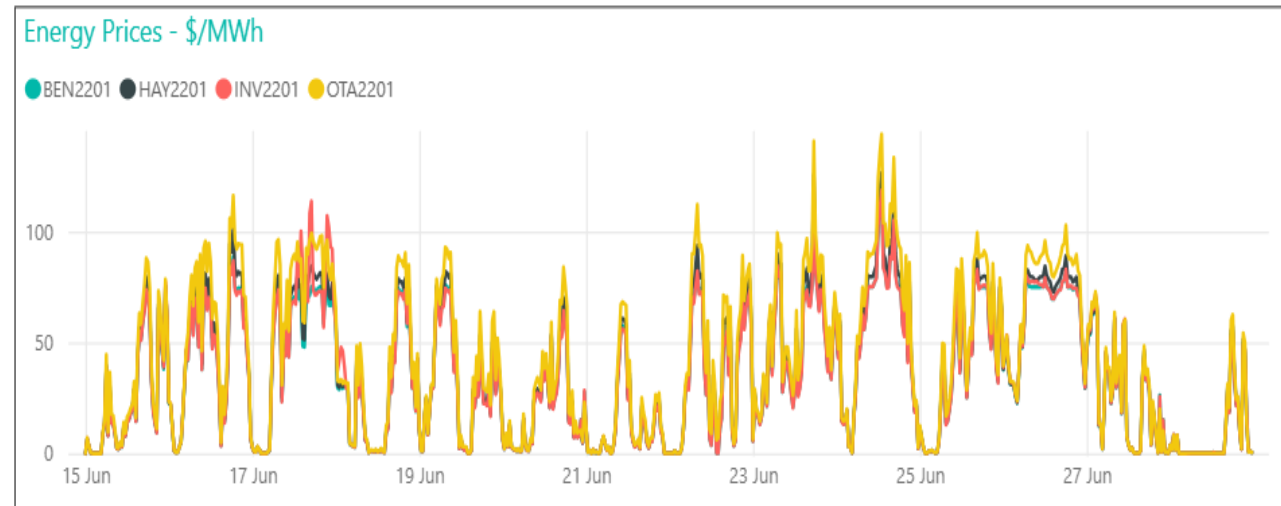
Demand

- Demand continues to increase with colder temperatures, significant increase from last week
- We are seeing tightening residual capacity periods due to demand increase, low wind and lower thermal commitment



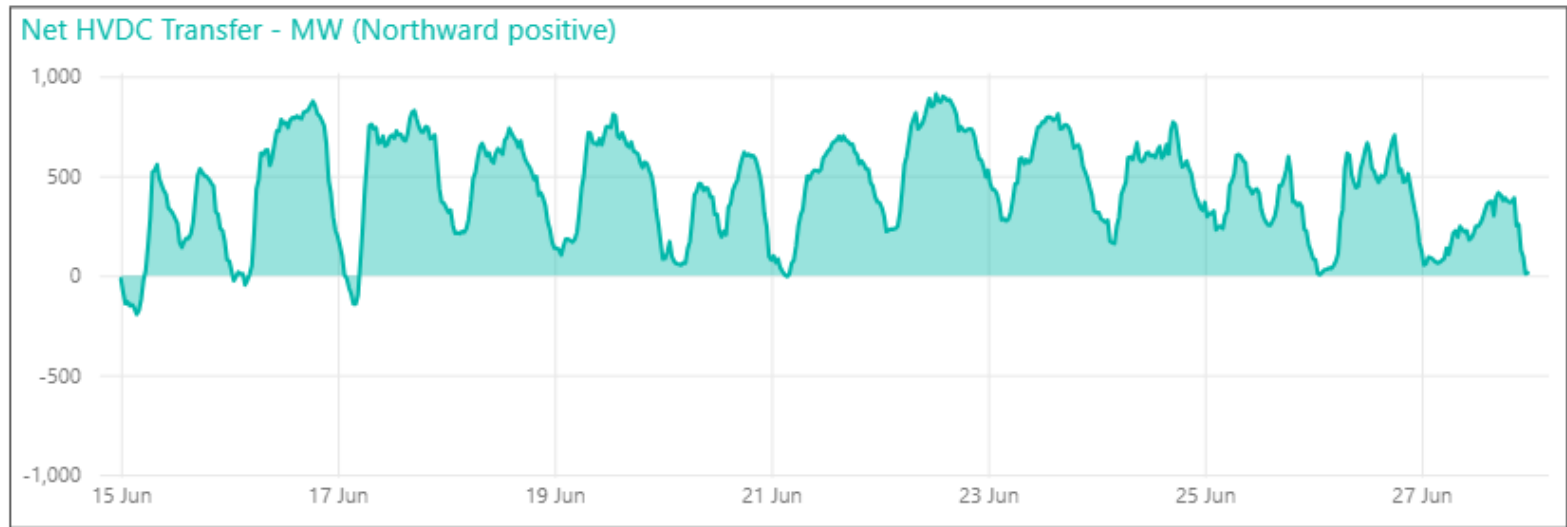
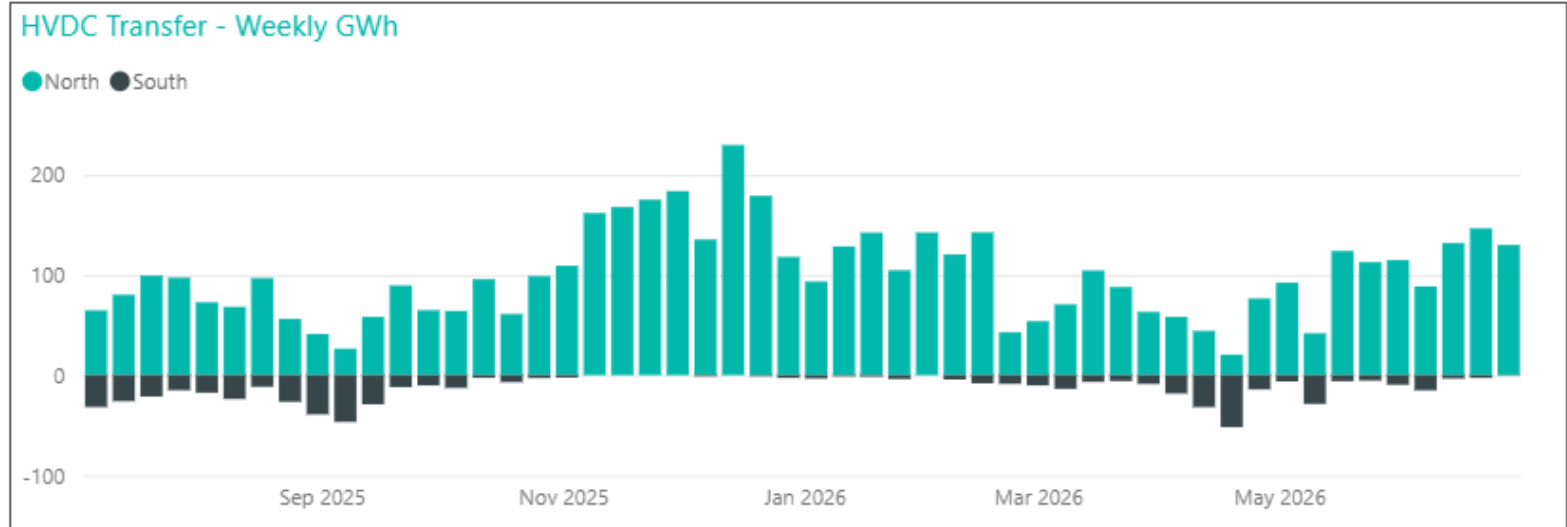
Pricing

- Average price last week at Ōtāhuhu has increased to \$47/MWh from \$37/MWh the week prior
- Peak of \$144/MWh at Ōtāhuhu on 1:00 pm 24 June due to a tight offer stack with thermal peakers setting price
- We begin to see consistent high demand periods (as expected in winter) resulting in thermal units being switched on



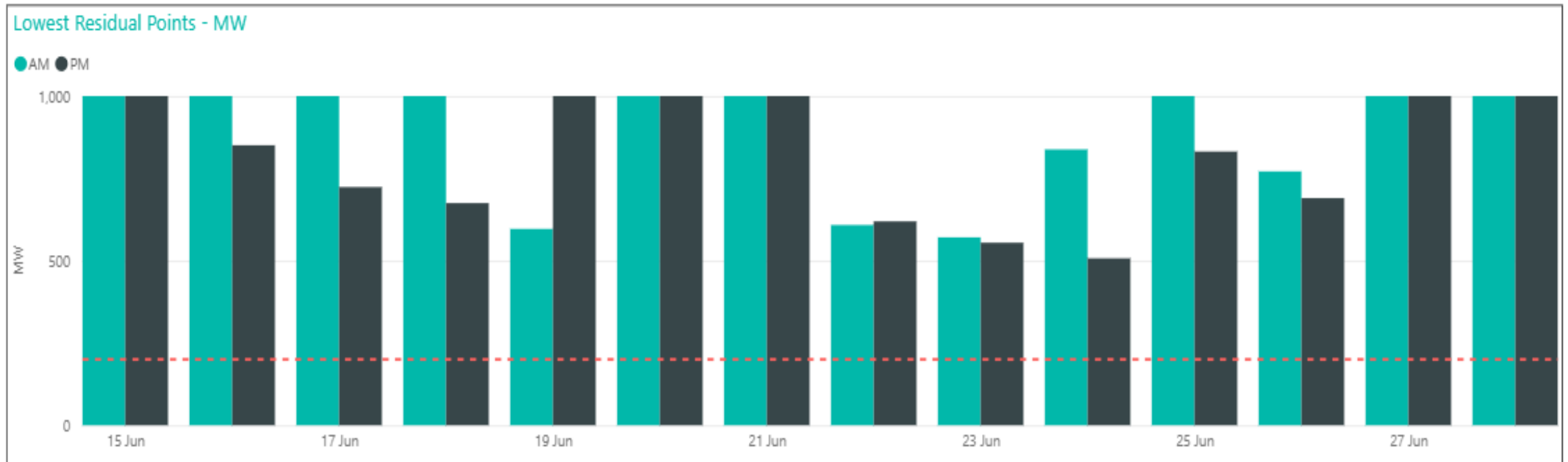
HVDC transfer

- HVDC transfer continues to be majority northward over the last two weeks
- In line with increasing demand periods and high hydro generation sending generation northwards



Capacity residual margins

- Some lower residual periods due to increasing demand, low wind generation periods and low thermal commitment. Lowest residual was 507 MW during the evening peak on 24 June at 6.00 pm.
- We continue to monitor residual capacity as we move into winter

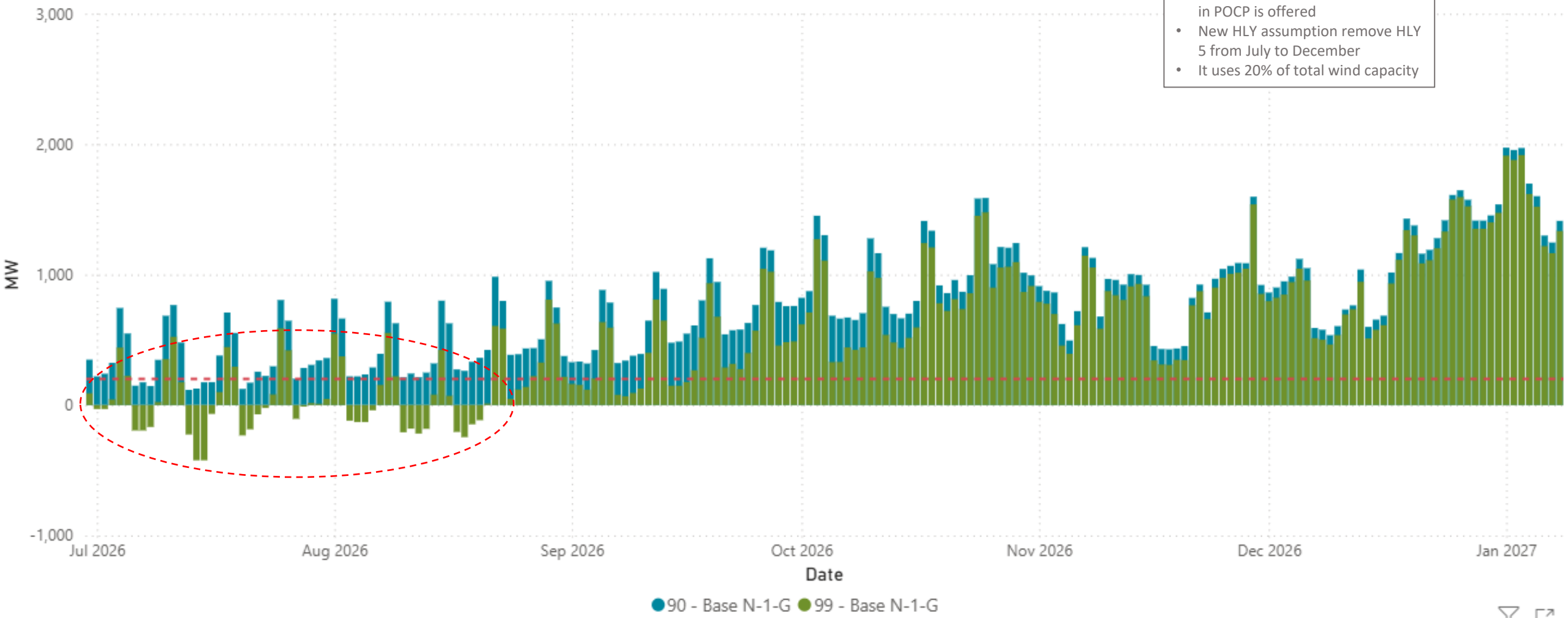




NZGB update

NZGB update: base capacity N-1-G

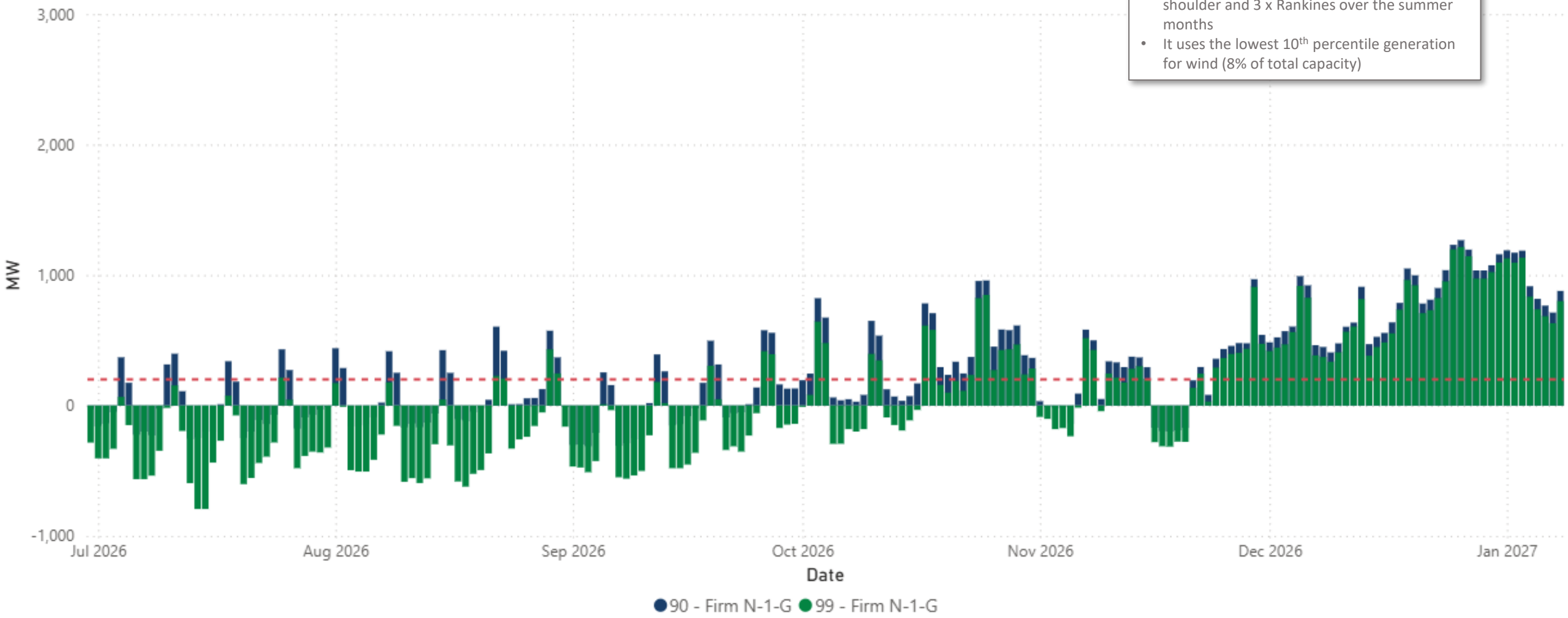
- Base case capacity at 90%
- ***This triggers the CAN process***
 - Assumes all generation available in POCP is offered
 - New HLY assumption remove HLY 5 from July to December
 - It uses 20% of total wind capacity



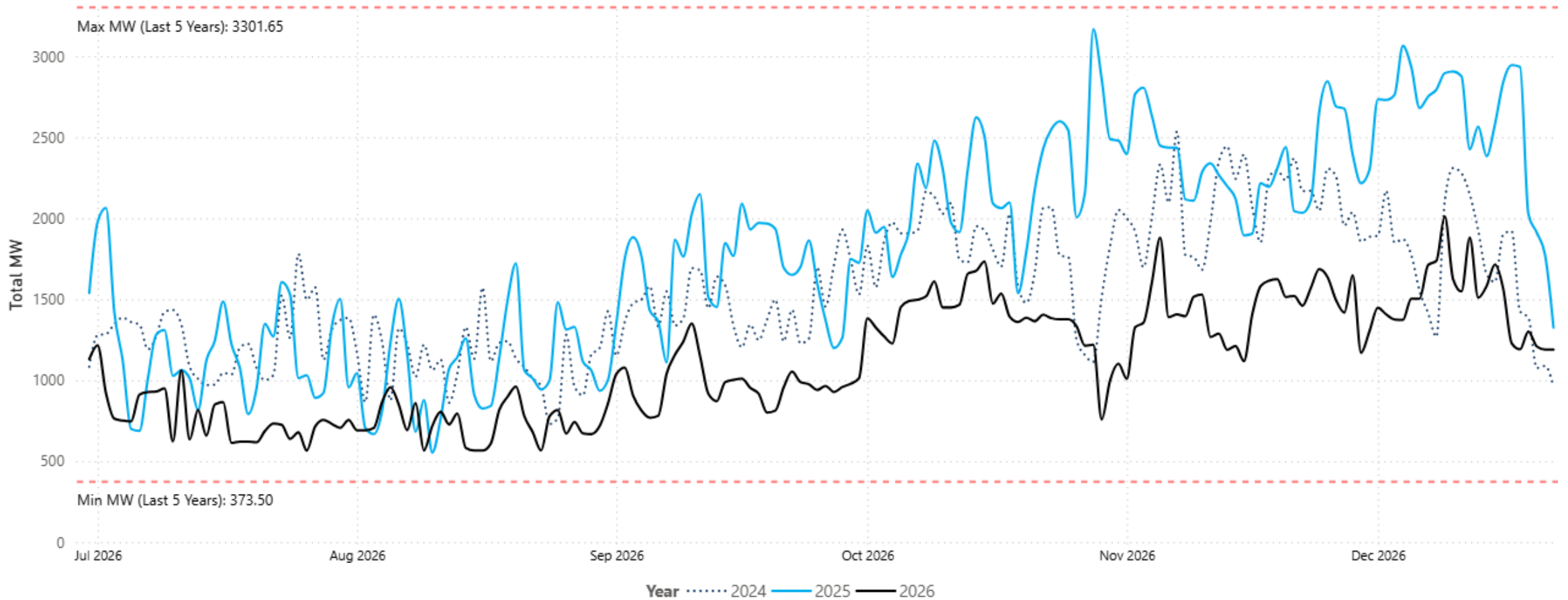
NZGB update: firm capacity only N-1-G

Firm capacity removes

- 1 HLY Rankine over winter, 2 x Rankines over shoulder and 3 x Rankines over the summer months
- It uses the lowest 10th percentile generation for wind (8% of total capacity)



POCP Generation Outages



Mean Difference
(2025/2026)

-692.14 MW

Mean % Difference
(2025/2026)

-35.18%

Date

30/06/2026

22/12/2026



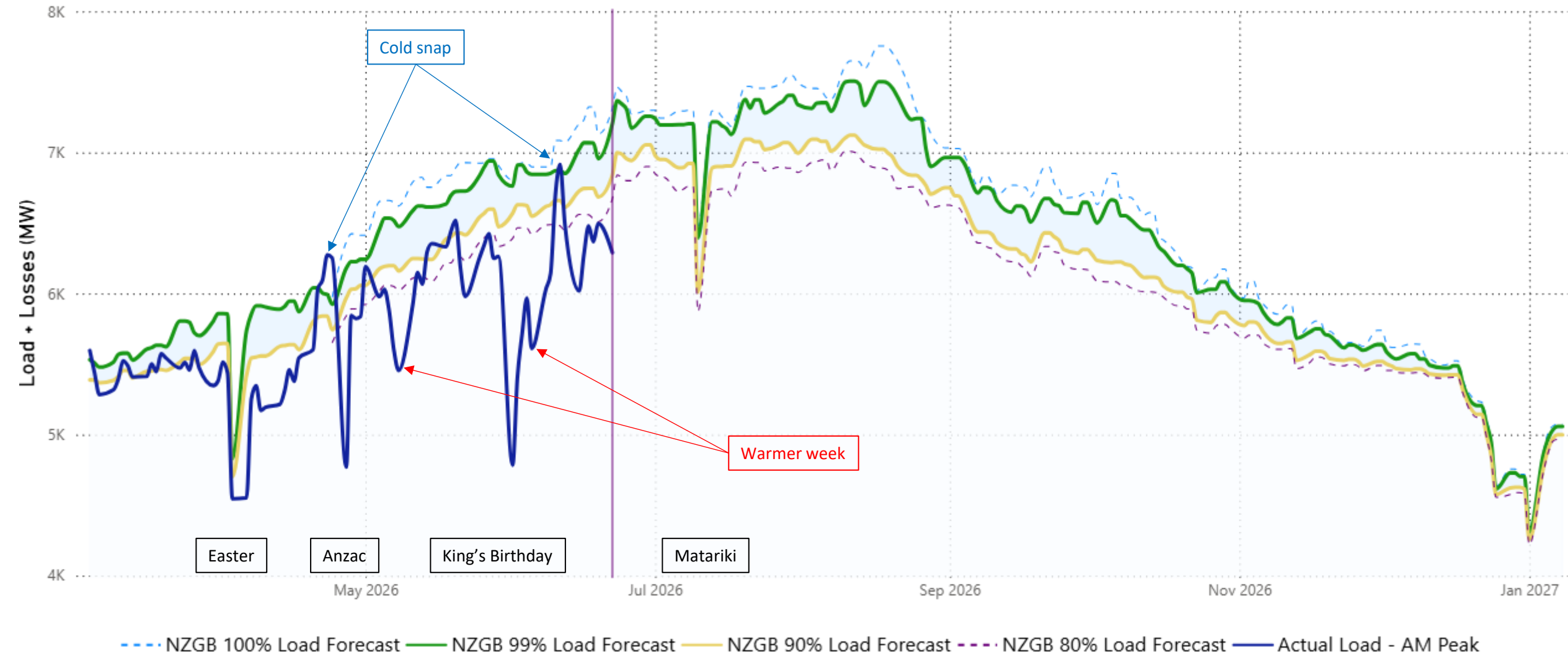
Year

■ 2024

■ 2025

■ 2026

Peak Load vs Forecast





Outages next 4 weeks

Outages

NNI outages

SNI outages

SI outages

Asset owners:

- Check in POCP for detailed dates
- Consider the impact on your own outages



NNI Outages

Week of 6 July

- EDG_T5
- HEP_ROS_2
- HOB_WRD_1
- DRY_BOB_HLY_1

Week of 13 July

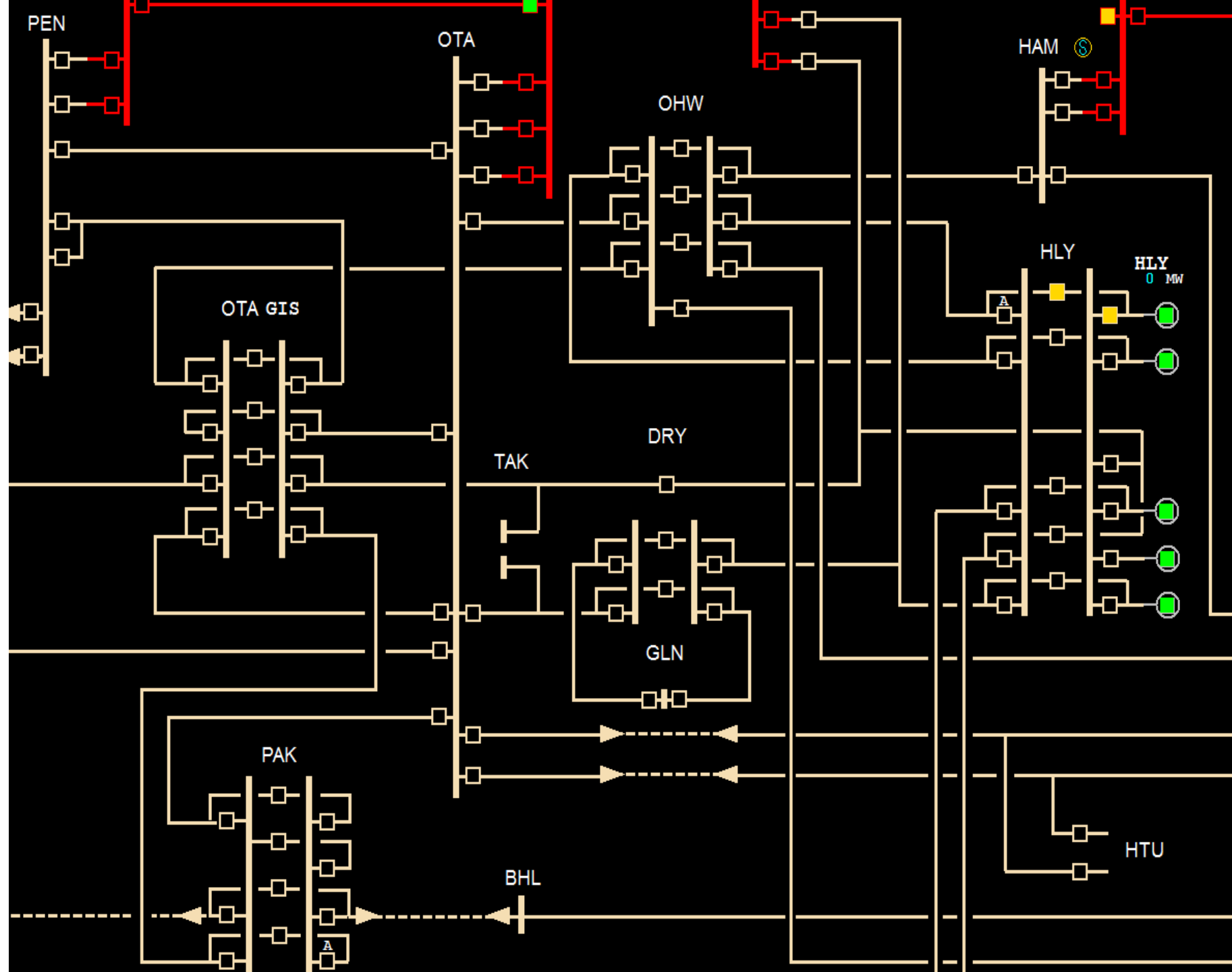
- EDG_T5
- HEP_ROS_2
- MNG_ROS_1
- OTA_ROS_2 (weekend)

Week of 20 July

- EDG_T5
- HEP_ROS_2
- HOB_WRD_1
- OHW_OTA_1

Week of 27 July

- EDG_T5
- HEP_ROS_2
- HOB_WRD_1
- OHW_OTA_2



SNI Outages

Week of 6 July

- HWA_OHG_1

Week of 13 July

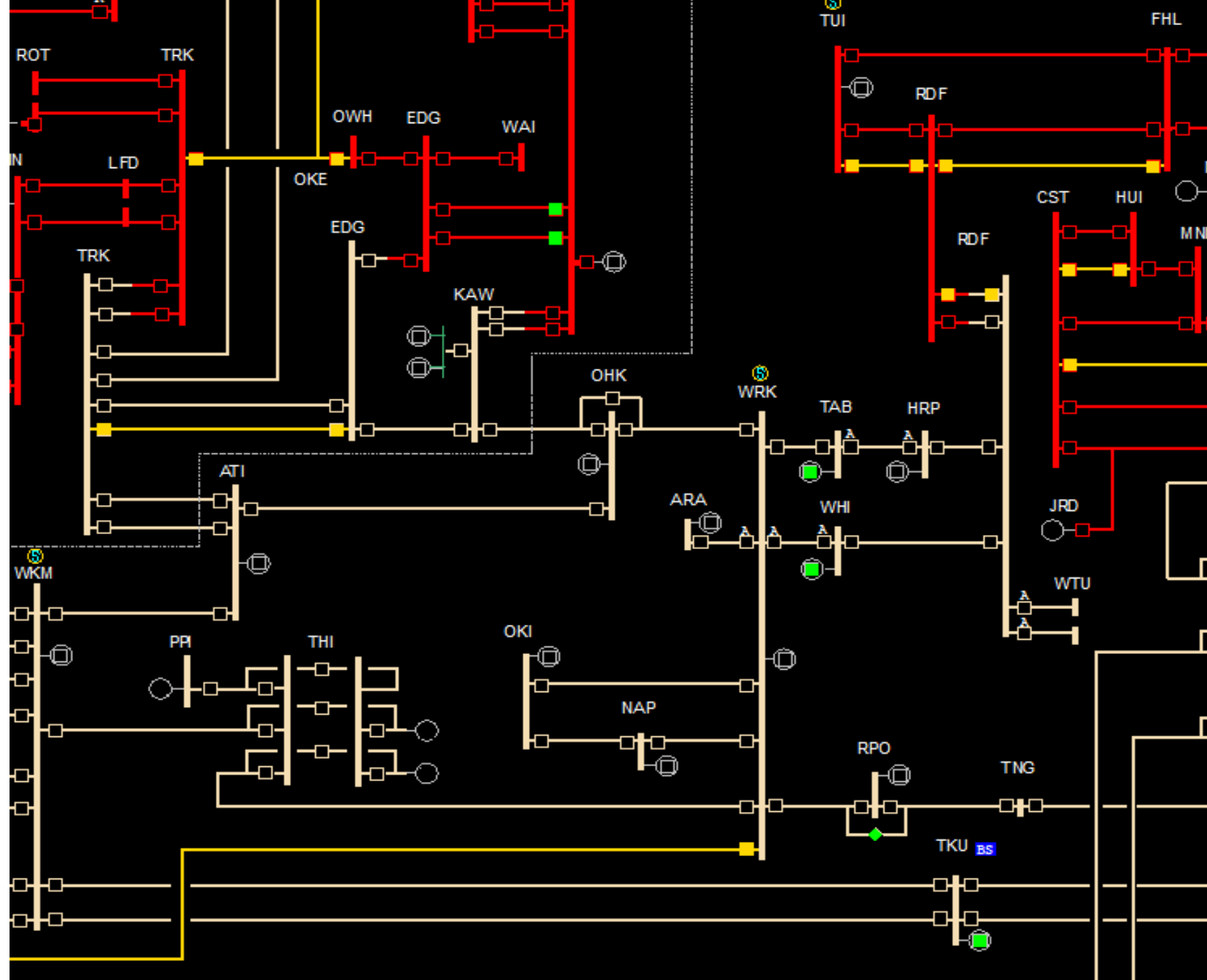
- HWA_OHG_1
- NAP_WRK_2

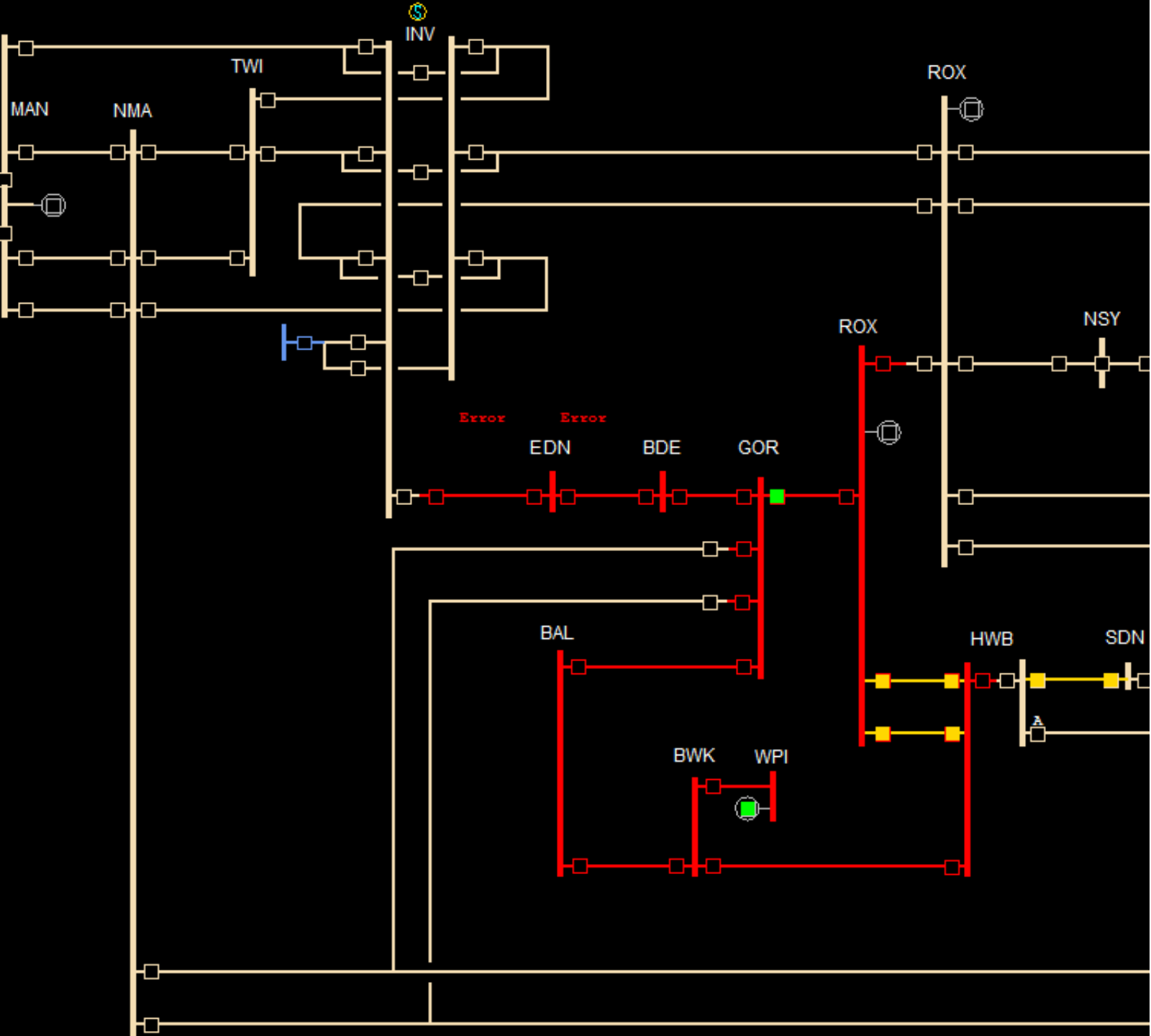
Week of 20 July

- BPE_MTN_WGN_2

Week of 27 July

- BPE_MTN_WGN_2
- BRK_SFD_3





SI Outages

Week of 6 July

- HOR_KBY_ISL_2
- DOB_RFN_IGH_1

Week of 13 July

- HKK_OTI_2
- COL_OTI_2

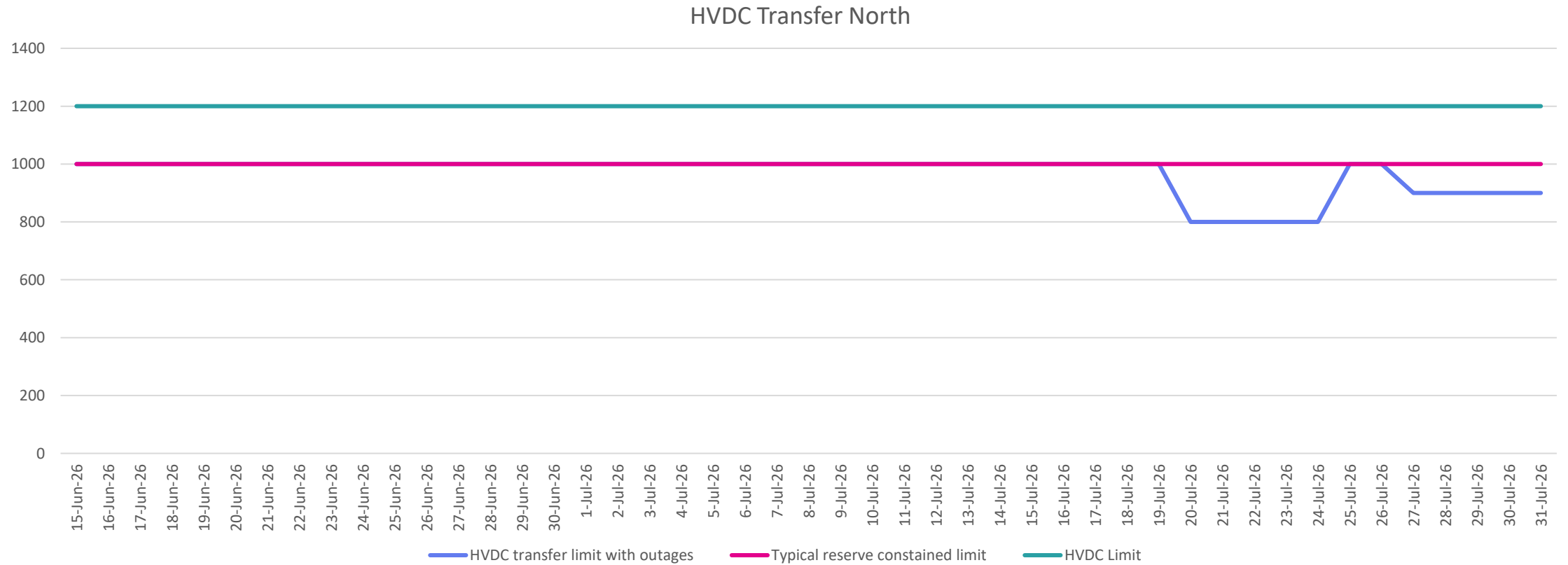
Week of 20 July

- EDN_INV_1
- DOB_GYM_1

Week of 27 July

- INV_NMA_1
- IGH_ROB_2

HVDC North transfer limit





Operational update

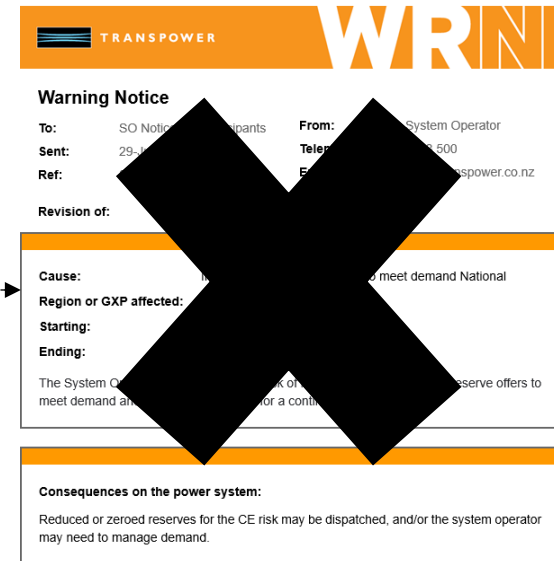
Operational Notices Update

✘ Operational 'Test' Notices sent in error yesterday

- Incl. **WRN!!** 😲

✓ Planned work to enhance our new Operational Notices system (SalesForce)

✓ Includes key enhancements for industry around **'Managing your Preferences'**



A revision of this notice will be issued if there is any change to the situation above.

[Manage Your Preferences](#) | [Privacy Policy](#) | [Terms and Conditions](#)



Operational Notices - Preference Centre Changes

The screenshot shows the Transpower Preference Centre interface. At the top is the Transpower logo. Below it is the 'Preference Centre' section with a sub-header 'CHOOSING YOUR REGION'. Three options are presented: 'National', 'North Island', and 'South Island', each with a brief description of the notice types received. Below this is the 'Operational Notices' section, showing a specific notice type 'CAN Customer Advice Notice - General'. Underneath, there are controls for 'SUBSCRIPTION' (a dropdown menu set to 'National') and 'COMMUNICATIONS' (checkboxes for 'Email' and 'SMS', both of which are checked).

TRANSPOWER

Preference Centre

Manage your notification preferences for operational notices. For each notice, choose your region and how you'd like to be notified.

CHOOSING YOUR REGION

National
Select National if you'd like to receive this notice type sent to North Island participants, South Island participants, and any notice sent Nationally.

North Island
Select North Island if you'd like to receive this notice type which is sent to only North Island participants, and any notice sent Nationally. You will not receive notices sent only to South Island participants.

South Island
Select South Island if you'd like to receive this notice type which is sent to only South Island participants, and any notice sent Nationally. You will not receive notices sent only to North Island participants.

Operational Notices

CAN Customer Advice Notice - General

SUBSCRIPTION: National

COMMUNICATIONS: Email SMS

Operational Notices - Preference Centre Changes

- ✓ Ability to select your communications preference at Notice Type level
- ✓ **Email or SMS** for:
 - CAN General
 - CAN Outage
 - Excursion
 - Warning
 - Grid Emergency

The screenshot displays the 'Operational Notices' preference center interface. It is organized into three distinct sections, each representing a different notice type: 'CAN Customer Advice Notice - General', 'OUT Customer Advice Notice - Outage', and 'EXN Excursion'. Each section contains a 'SUBSCRIPTION' dropdown menu set to 'National' and a 'COMMUNICATIONS' section with two toggle buttons for 'Email' and 'SMS', both of which are currently checked. The interface is clean and modern, with a light blue and grey color scheme.

Notice Type	Subscription	Email	SMS
CAN Customer Advice Notice - General	National	Checked	Checked
OUT Customer Advice Notice - Outage	National	Checked	Checked
EXN Excursion	National	Checked	Checked

Operational Notices - Acknowledgement

- ✓ Ability for NCC to request Acknowledgement for ANY notice type (not just GEN)
 - E.g. Low Residual CAN
- ✓ Only Critical Control Rooms requested to respond to these Acknowledgements

TRANSPOWER **CAN**

Customer Advice Notice **Revision**

To: SO Notice NZ Participants **From:** The System Operator
Sent: 29-Jun-2026 15:41 **Telephone:** 0800 488 500
Ref: 800000214 **Email:** NMDData@transpower.co.nz

Revision of: CAN, 800000213, 29-jun-2026 15:33, test notice only

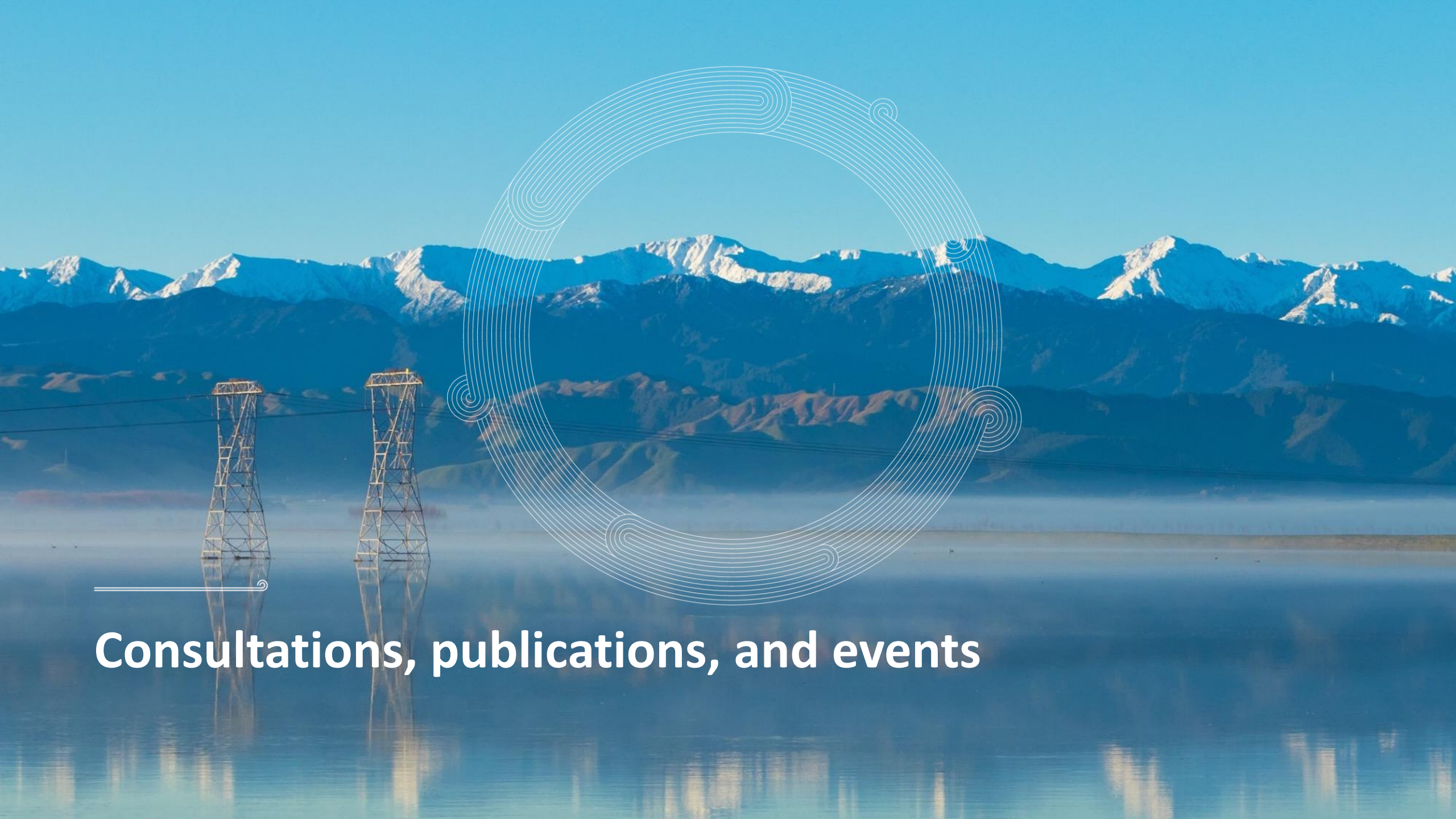
test notice only

Test notice only

Acknowledge Notice

A revision of this notice will be issued if there is any change to the situation above.

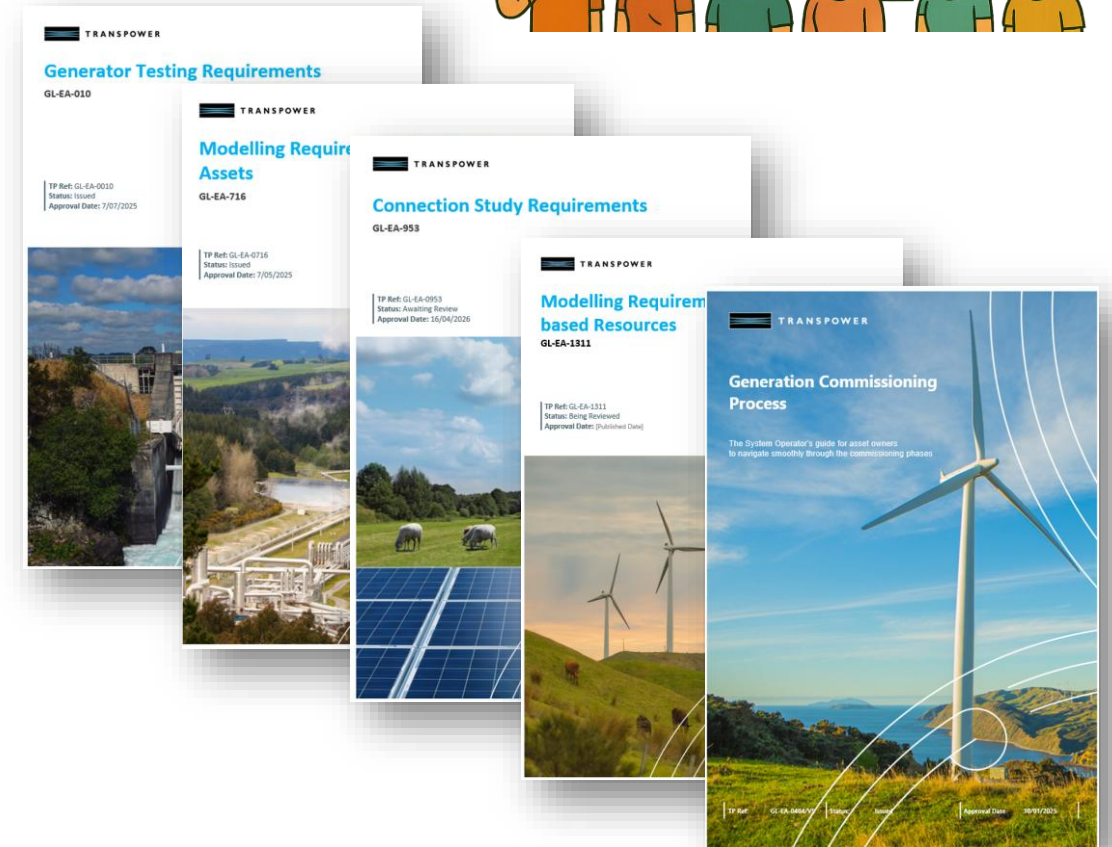
[Manage Your Preferences](#) | [Privacy Policy](#) | [Terms and Conditions](#)



Consultations, publications, and events

CACTIS Update

- Connected Asset Commissioning, Testing, and Information Standard (CACTIS) effective from 1 July 2026 (tomorrow)
- Legacy clause provisions applications open until 1 August 2026
- **System Operator Engineering Forum** also tomorrow at Transpower's Hamilton, Wellington, and Christchurch offices
- **Guidelines, templates, and webpages** updated to align with CACTIS



Consultations, publications, and events

Our next phase of consultation on the new [System Operator Strategy](#) is now open and we seek your feedback by Friday 24 July. Note we will be hosting a webinar on Wednesday 8 July to talk through our draft strategic priorities.

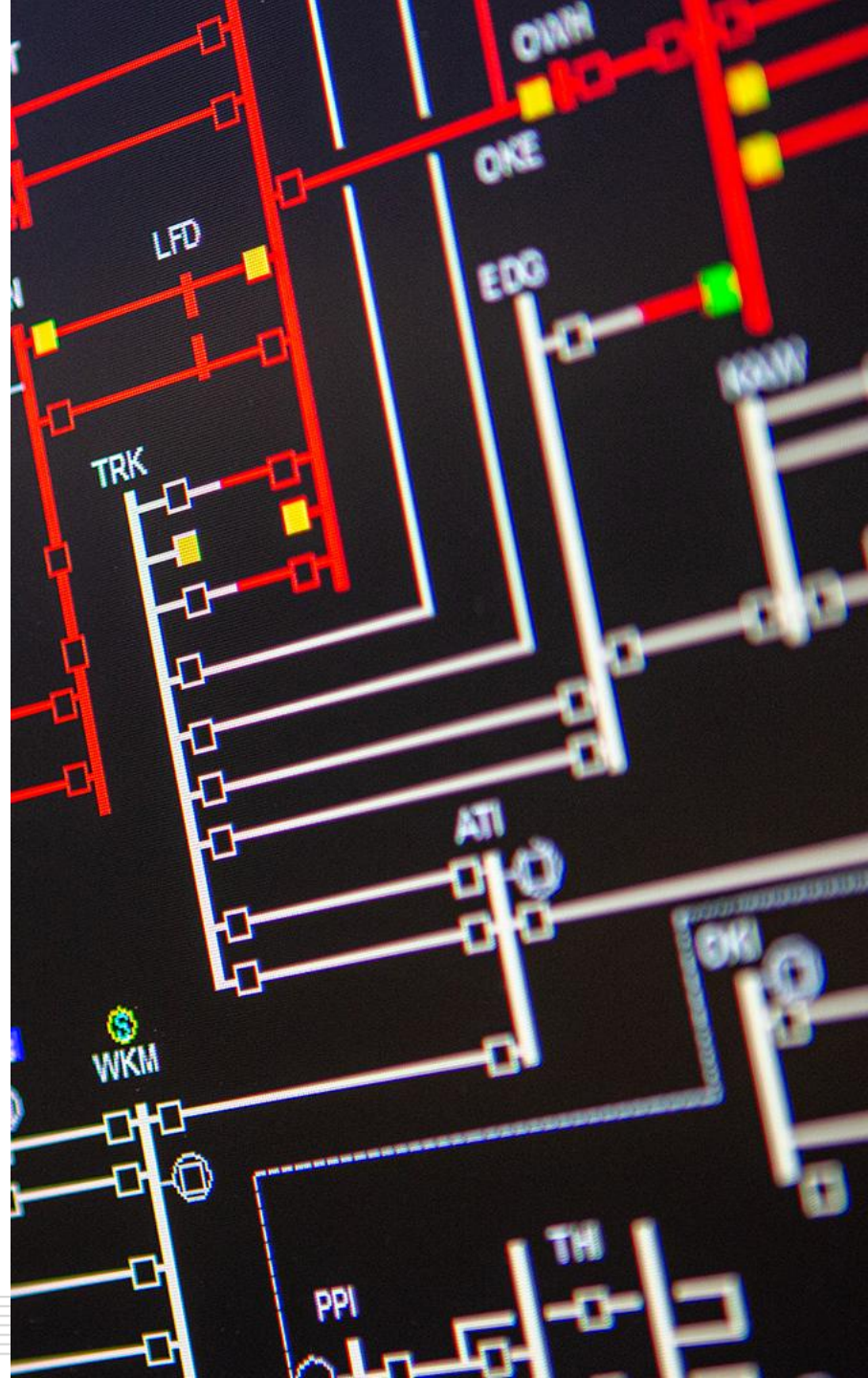
We have published a minor update to the [System Security Forecast N-1 Thermal and Voltage Study](#) which includes changes to the Hawke's Bay and Taranaki regions.

We have published an [information paper](#) on how the System Operator manages impartiality risks throughout the outage planning process.

We will be publishing the final [Security of Supply Assessment \(SOSA\) 2026](#) on our website today. We will provide an overview at the next SO Forum.

We will publish the [June Energy Security Outlook](#) on our website today.

We will be discussing the **2026 Wairakei ring outages** at the 13 July 2026 SO Industry Forum.





Iberian Peninsula blackout

Questions / Pātai



Please raise your hand

If you have feedback let us know via our [Feedback Form](#)

TRANSPower.CO.NZ

