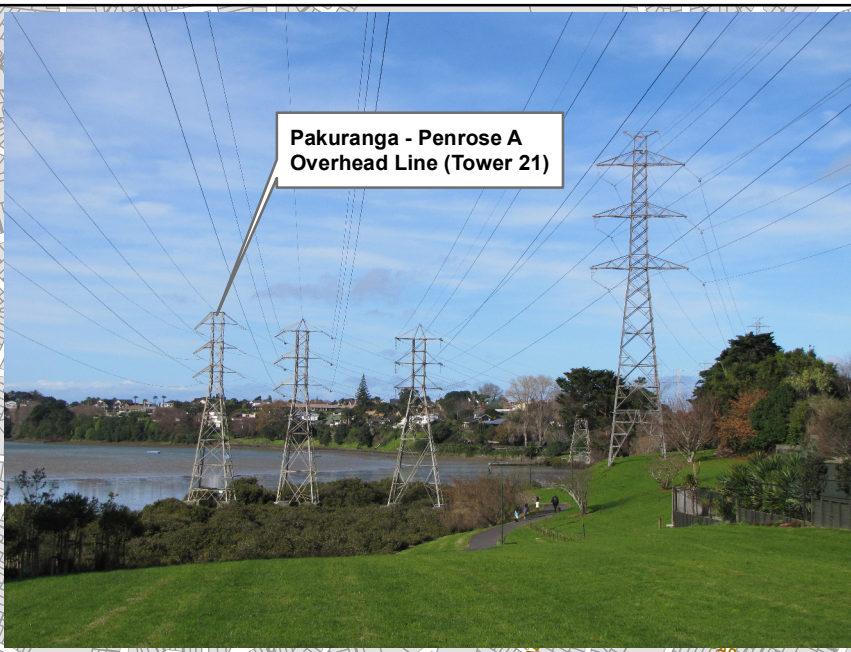
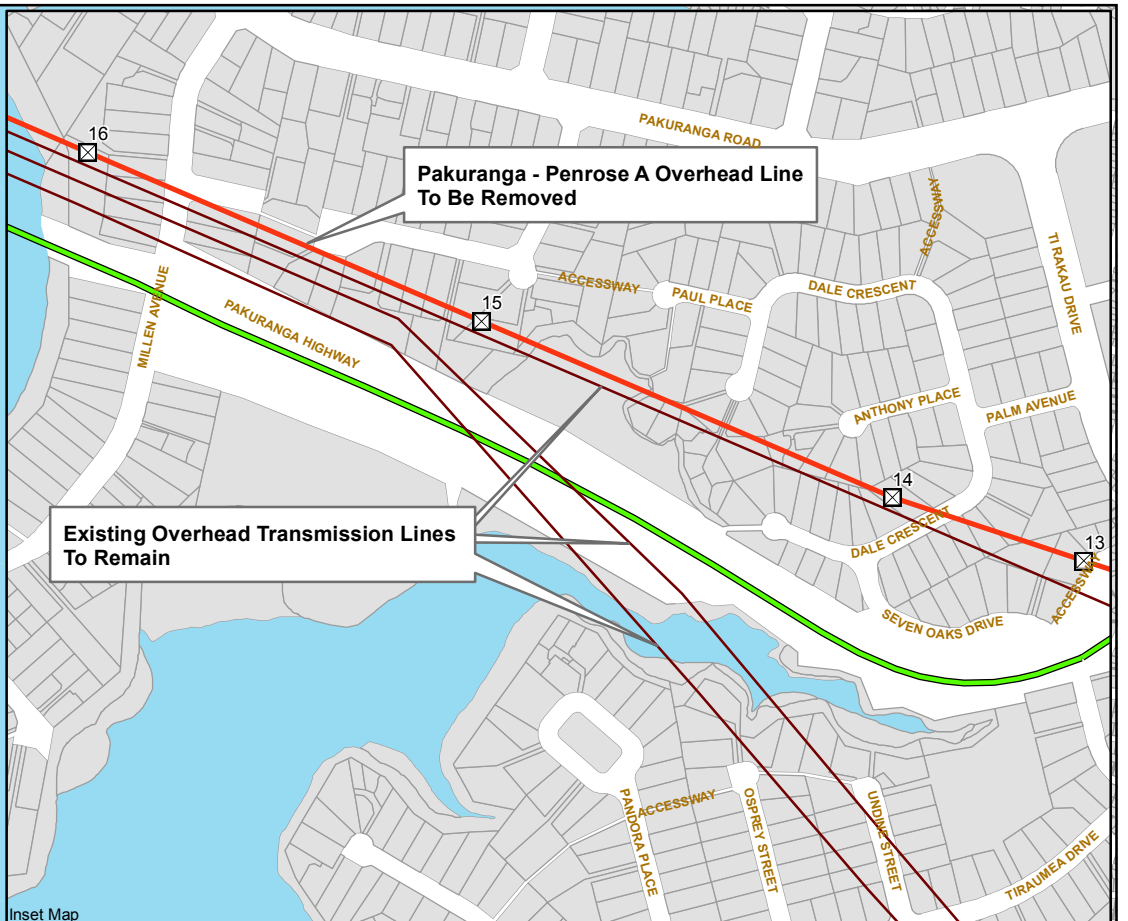


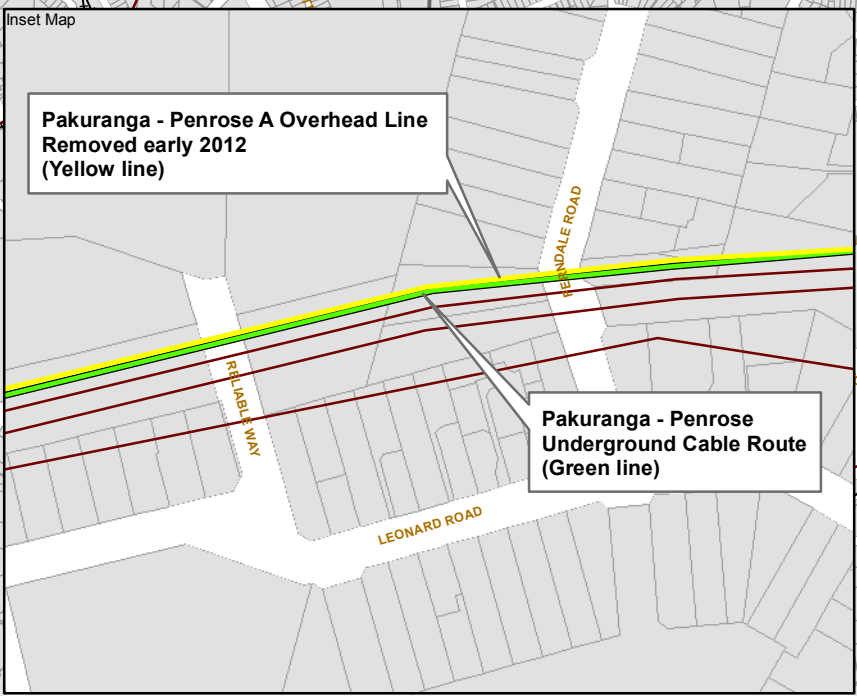
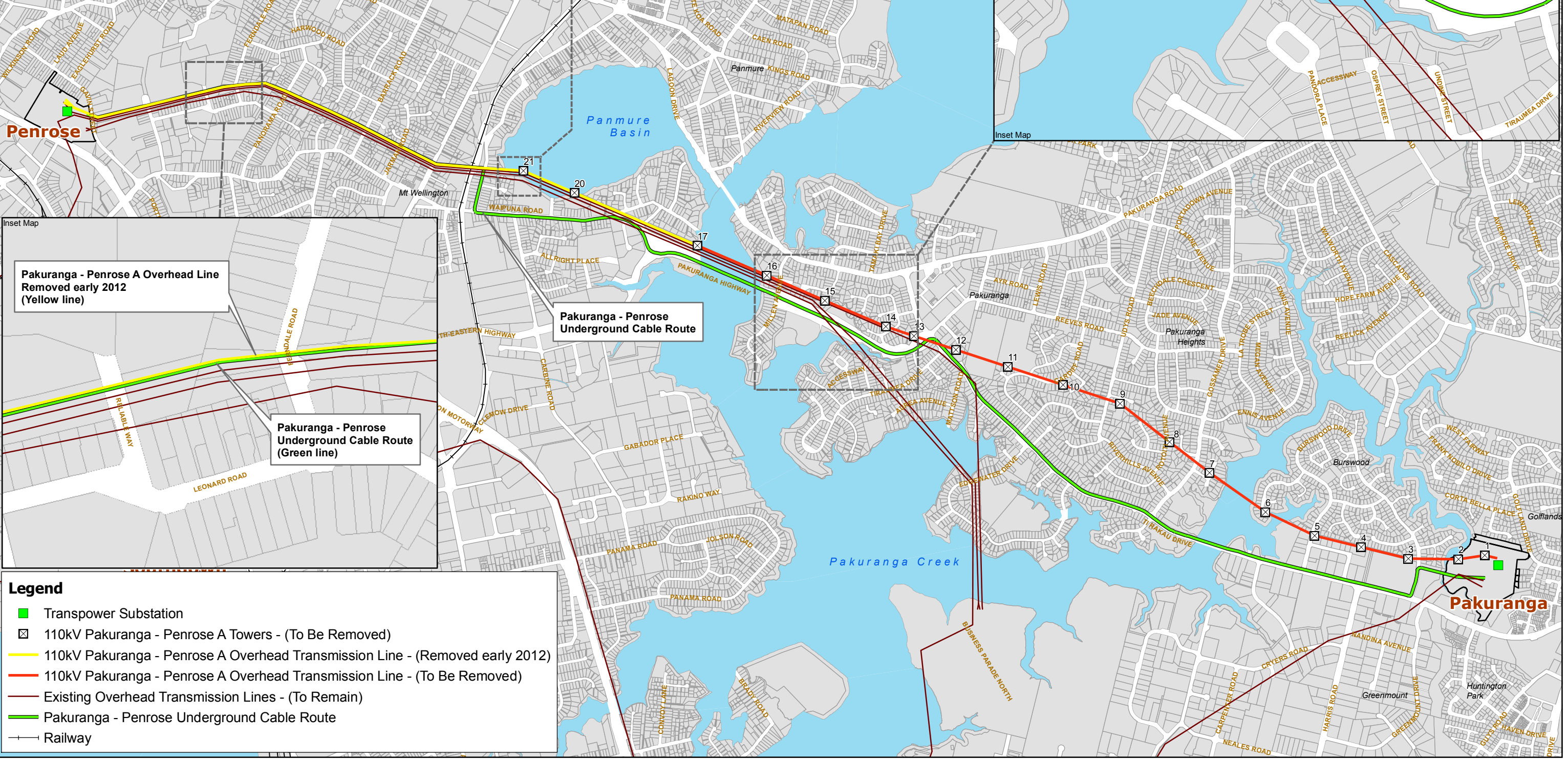
Pakuranga - Penrose A Overhead Line (Tower 21)



Pakuranga - Penrose A Overhead Line To Be Removed



Existing Overhead Transmission Lines To Remain



Pakuranga - Penrose A Overhead Line Removed early 2012 (Yellow line)

Pakuranga - Penrose Underground Cable Route (Green line)

Pakuranga - Penrose Underground Cable Route

- Legend**
- Transpower Substation
 - ⊠ 110kV Pakuranga - Penrose A Towers - (To Be Removed)
 - 110kV Pakuranga - Penrose A Overhead Transmission Line - (Removed early 2012)
 - 110kV Pakuranga - Penrose A Overhead Transmission Line - (To Be Removed)
 - Existing Overhead Transmission Lines - (To Remain)
 - Pakuranga - Penrose Underground Cable Route
 - Railway