

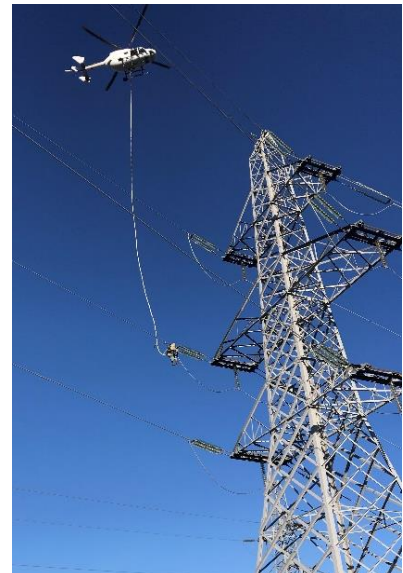


## Live Line Minimum Approach Distance (LLMAD) Encroachment

### What happened

During helicopter live line joint testing in Fiordland, whilst a suspended live line worker was exiting the conductor on completion of testing, a mispositioning of the helicopter occurred. This allowed a pendulum effect to happen in the live line rope permitting the suspended live line worker to potentially encroach the LLMAD.

Example of activity being undertaken.



### Immediate actions

- Work stopped to address encroachment. Hold point briefing completed.
- The helicopter to land the suspended live line worker further out on the conductor and enable them to move in and out to the joint.
- Use of radio confirmation to ensure the suspended live line worker is steady and directly below the helicopter before being lifted off the conductor.
- Investigation in progress

### For more information, please contact:

Name	Neville Cole
Position	Project Manager
Mobile	027 466 3846
Email	Neville.cole @transpower.co.nz
Maximo ref	152117
Incident date	16 January 2024