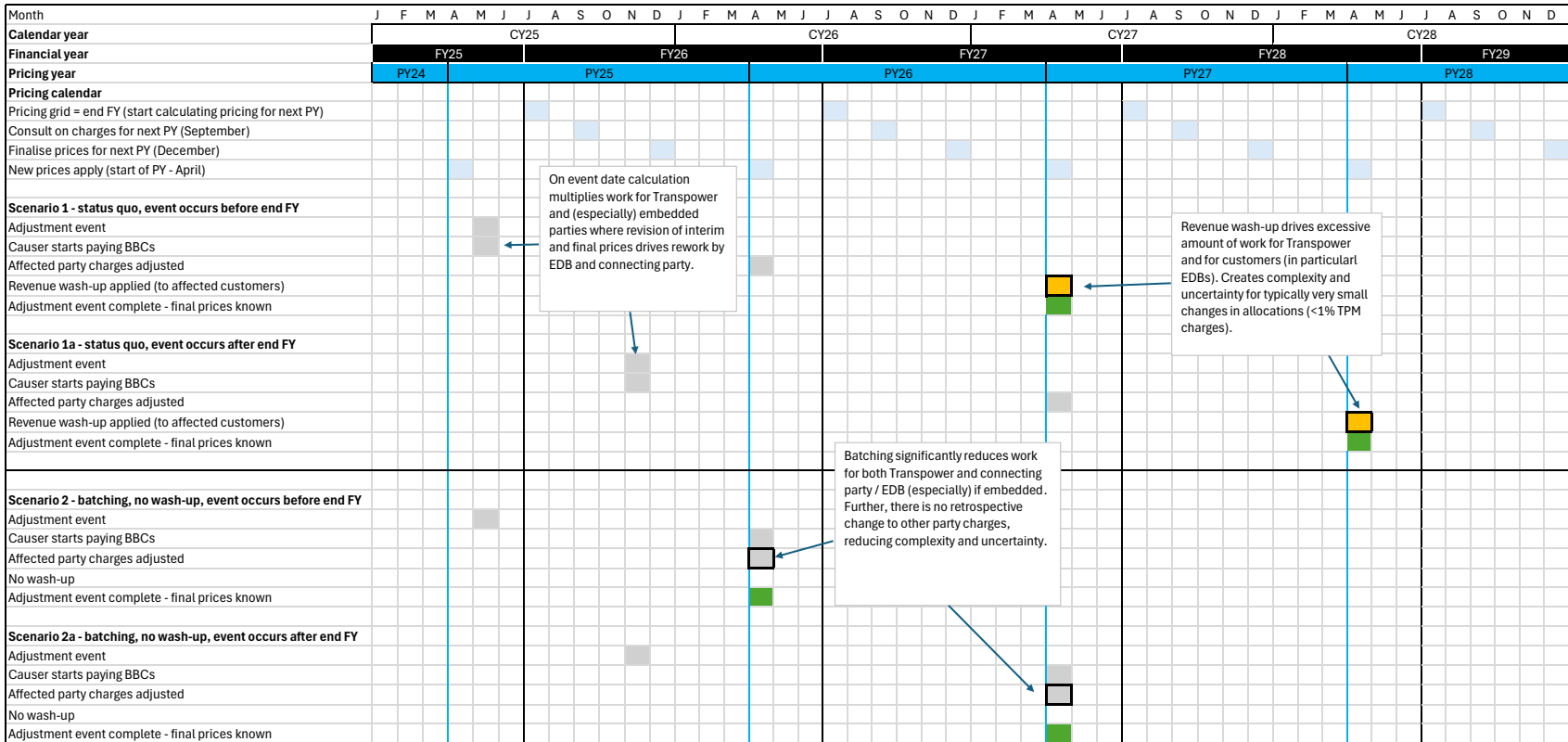


**Attachment A.3 - Diagrams to illustrate how batching would change the timing of charges and wash-ups for the 'causing customer' and other affected parties**



**Notes**

Removal of wash-up brings forward price certainty by 12 months and avoids additional regulatory compliance requirements triggered by each adjustment (for EDBs)

Each adjustment alters allocations for every customer, this requires performing wash-up calculations for every customer, that wash-up requires calculations for each BBI then calculations and records for each customer

Each successive adjustment event further alters allocations, requiring both maintenance of outcomes from each event, the result being a compounding level of complexity for what is typically very small sums on a per asset, per customer basis

Affected customers have to account for adjustment events, this is particularly complex for EDB customers due to flow through to regulatory disclosures, pricing and pricing and compliance statements where the complexity drives manual management and additional assurance

Examples above are for a single adjustment event, in practice multiple events occur each year and quantities are increasing year on year.

- Key**
- Point at which adjustment event price changes finalised for affected customers
  - Point at which washup applied
  - Point at which adjustment event complete and final prices are known