



TRANSPower

# Bunnythorpe to Tokaanu Upgrade

Description of works

Aug 2025



# Foundation Strengthening (concrete)

## What:

Excavate around each leg and strengthen with concrete

## Landowner impact (general):

- Approx. 1 week on site per tower
- Heavy machinery access (concrete truck, digger etc.)
- May require concrete transfer pit (see picture)



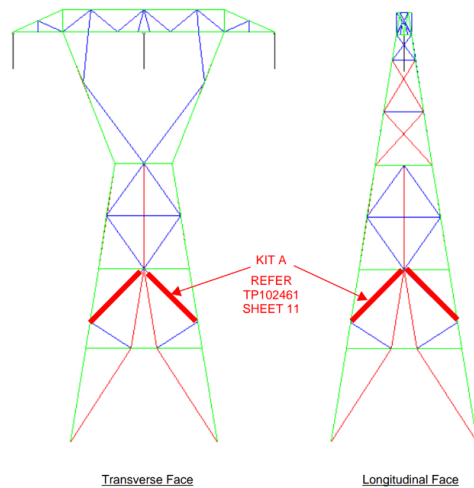


# Tower strengthening (Steel)

**What:** Adding and / or replacing steel on a tower to strengthen the structure

**Landowner impact (general):**

- Light 4x4 and trailer access (HIAB may be required)
- May need to be undertaken during an outage



# Midspan Earthworks

**What:** Earthworks between two towers to ensure suitable ground clearances are maintained





# Tower raise

**What:** Increase tower height by up to 5.5m

**Landowner impact (general):**

- Crane pad installed
- Access track upgrades to enable heavy machinery access (including crane)
- Onsite for 3 – 5 days during an outage



# Replacement / New Tower

## Landowner impact (general):

Preparatory works: 1-2 weeks

- Access track upgrades
- Heavy machinery access
- Install new tower site pad

Foundations (3-5 weeks)

- Install foundations (requires earthworks and concrete)

Tower assembly (1-2 weeks)

- Undertaken during an outage
- Heavy machinery (including a crane)





# Attachment Points Modification

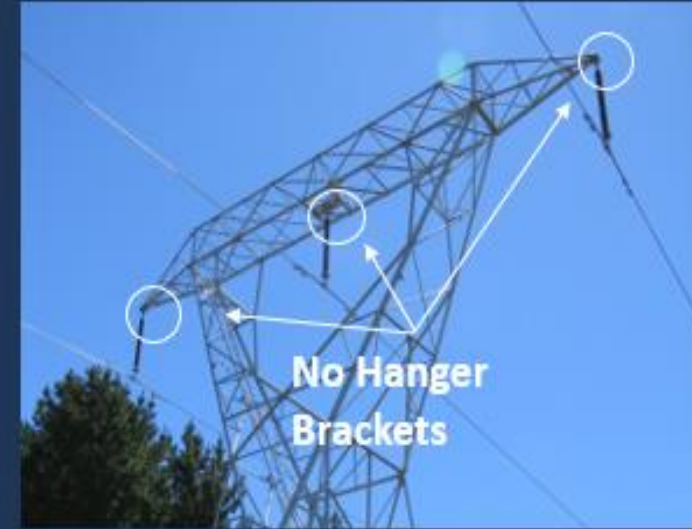
**What:** Change to how the conductor (wire) attaches to the tower.

**Landowner impact (general):**

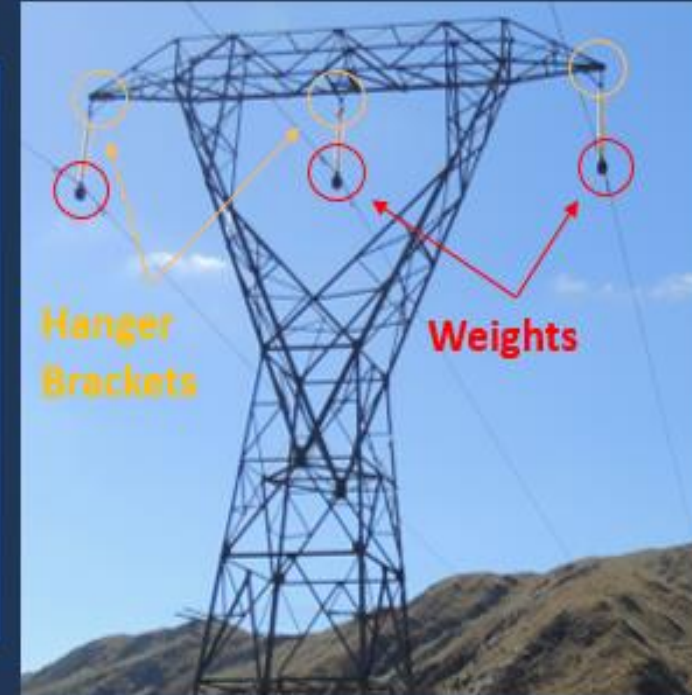
- Light 4x4 and trailer access (HIAB may be required)
- May need to be undertaken during an outage



Inverted Vee's



Strain Conversions





**Thank you**

TRANSPower.CO.NZ

