

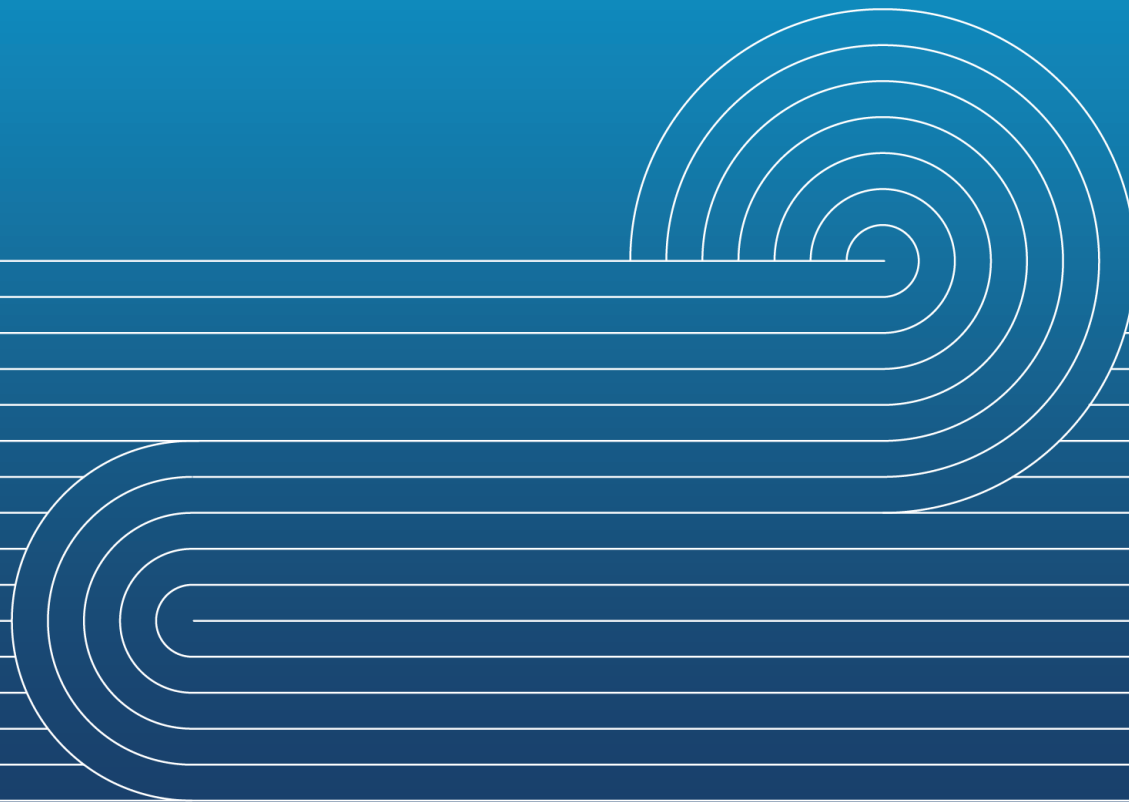


TRANSPower

Central North Island Upgrade

Description of works

Aug 2025



Foundation Strengthening (concrete)

Quantity: 272

What:

Excavate around each leg and strengthen with concrete

Landowner impact (general):

- Approx. 1 week on site per tower
- Heavy machinery access (concrete truck, digger etc.)
- May require concrete transfer pit (see picture)



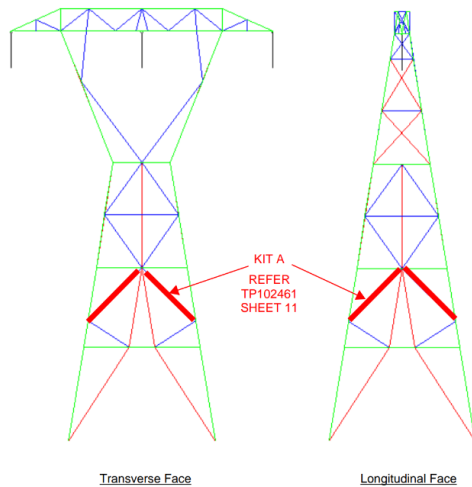
Tower strengthening (Steel)

Quantity: 169

What: Adding and / or replacing steel on a tower to strengthen the structure

Landowner impact (general):

- Light 4x4 and trailer access (HIAB may be required)
- May need to be undertaken during an outage



Midspan Earthworks

Quantity: 19

What: Earthworks between two towers to ensure suitable ground clearances are maintained



Tower raise

Quantity: 55

What: Increase tower height by up to 5.5m

Landowner impact (general):

- Crane pad installed
- Access track upgrades to enable heavy machinery access (including crane)
- Onsite for 3 – 5 days during an outage



Replacement / New Tower

Replacement tower quantity: 4

New midspan tower quantity: 1

Landowner impact (general):

Preparatory works: 1-2 weeks

- Access track upgrades
- Heavy machinery access
- Install new tower site pad

Foundations (3-5 weeks)

- Install foundations (requires earthworks and concrete)

Tower assembly (1-2 weeks)

- Undertaken during an outage
- Heavy machinery (including a crane)



Attachment Points Modification

Quantity: 323

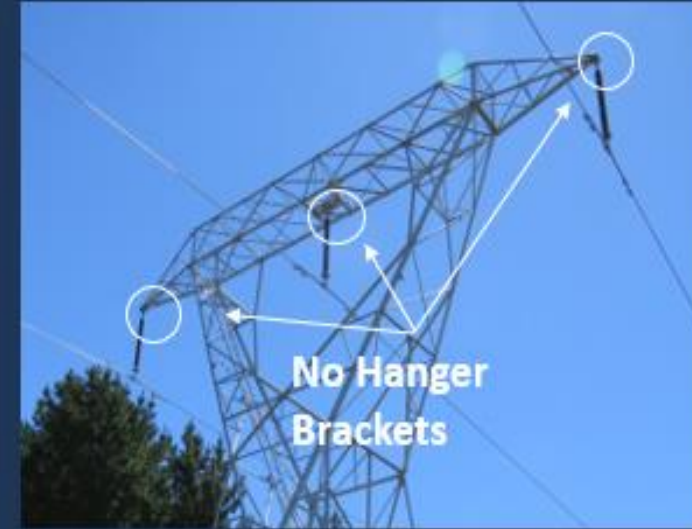
What: Change to how the conductor (wire) attaches to the tower.

Landowner impact (general):

- Light 4x4 and trailer access (HIAB may be required)
- May need to be undertaken during an outage



Inverted Vee's



Strain Conversions

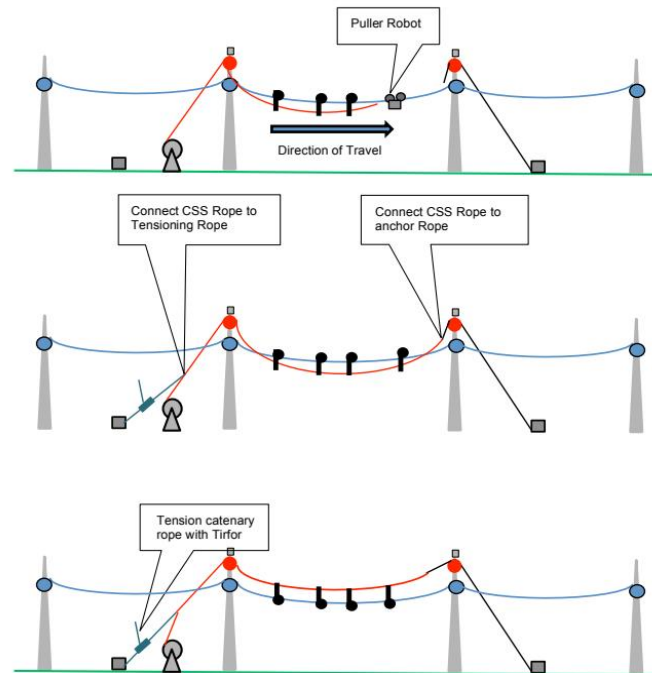


Catenary Support System (CSS)

What: Safety tool used to protect roads and other overhead utilities when we are pulling conductor.

Landowner impact (general):

- Access upgrades for heavy machinery access
- 10 x 20m area may be flattened and gravel for machinery

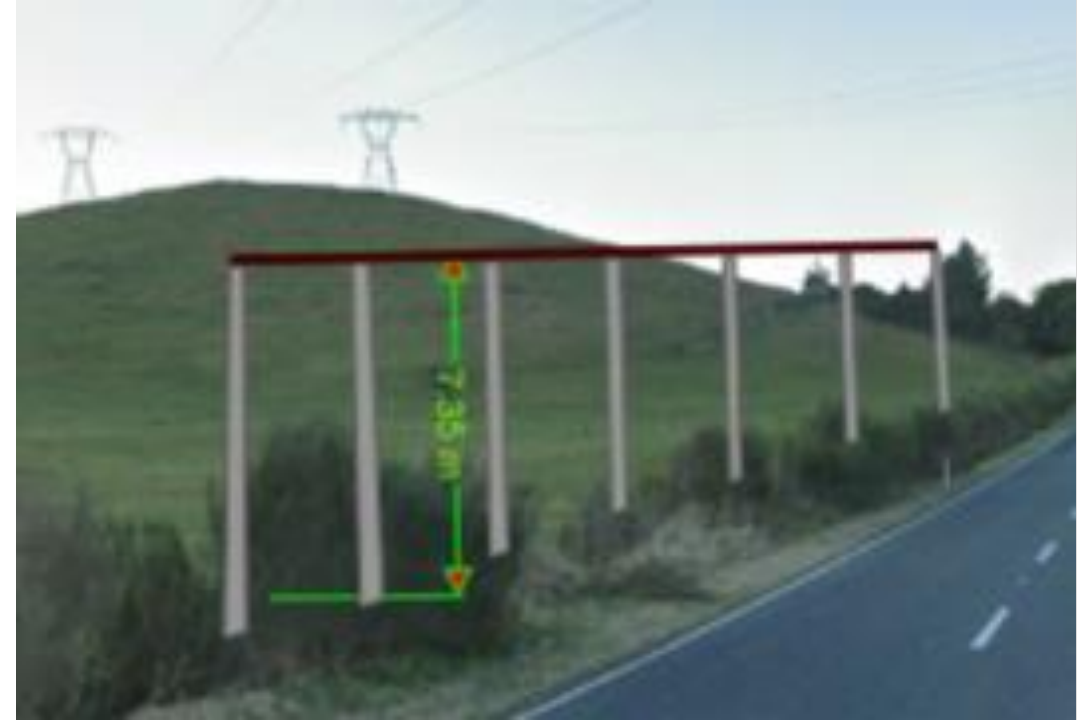


Hurdle

What: Safety tool used to protect roads and other overhead utilities when we are pulling conductor.

Landowner impact (general):

- Access upgrades for heavy machinery access
- Hurdle area may need to be flattened / graveled



Wiring Site

Quantity: 33

What: Wiring sites set up every 3-6km along the line to pull the old conductor out and the two new conductors into place.

Landowner impact (general):

- Take up approx. 0.5ha
- Wiring pad graveled and leveled
- **LOTS** of heavy machinery access
- High level of light 4 x 4 vehicle traffic
- Approx. 15 staff per site
- Portaloo onsite



Undergrounding section of The Lines Company Asset

What: To keep our teams safe, we will be undergrounding sections of The Lines Company Asset that cross under or near our transmission lines.

Undergrounding may either be permanent or temporary. The designs are still being finalised, and we are currently working with The Lines Company to understand the requirements for both options.





Thank you

TRANSPower.CO.NZ

