



TRANSPOWER

Central North Island Upgrade

Description of works

Aug 2025



Foundation Strengthening (concrete)

Quantity: 272

What:

Excavate around each leg and strengthen with concrete

Landowner impact (general):

- Approx. 1 week on site per tower
- Heavy machinery access (concrete truck, digger etc.)
- May require concrete transfer pit (see picture)



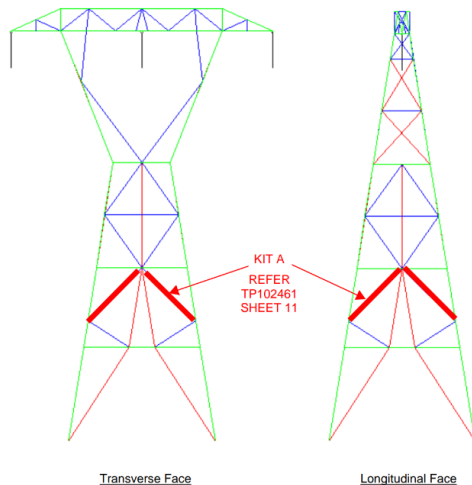
Tower strengthening (Steel)

Quantity: 169

What: Adding and / or replacing steel on a tower to strengthen the structure

Landowner impact (general):

- Light 4x4 and trailer access (HIAB may be required)
- May need to be undertaken during an outage



Midspan Earthworks

Quantity: 19

What: Earthworks between two towers to ensure suitable ground clearances are maintained



Tower raise

Quantity: 55

What: Increase tower height by up to 5.5m

Landowner impact (general):

- Crane pad installed
- Access track upgrades to enable heavy machinery access (including crane)
- Onsite for 3 – 5 days during an outage



Replacement / New Tower

Replacement tower quantity: 4

New midspan tower quantity: 1

Landowner impact (general):

Preparatory works: 1-2 weeks

- Access track upgrades
- Heavy machinery access
- Install new tower site pad

Foundations (3-5 weeks)

- Install foundations (requires earthworks and concrete)

Tower assembly (1-2 weeks)

- Undertaken during an outage
- Heavy machinery (including a crane)



Attachment Points Modification

Quantity: 323

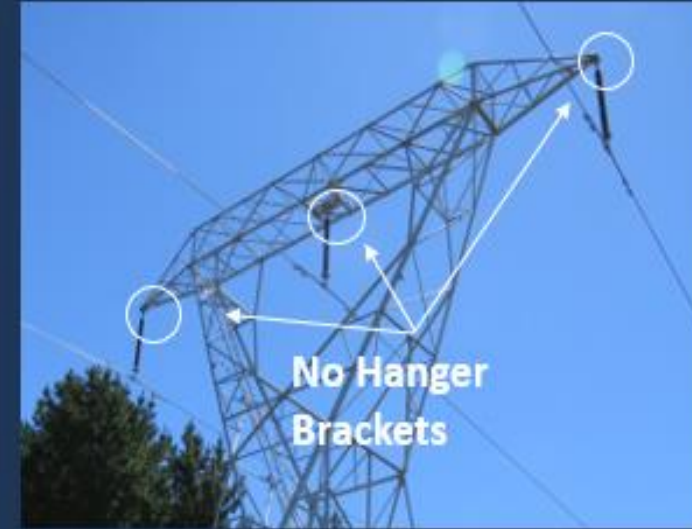
What: Change to how the conductor (wire) attaches to the tower.

Landowner impact (general):

- Light 4x4 and trailer access (HIAB may be required)
- May need to be undertaken during an outage



Inverted Vee's



Strain Conversions

